



A U T O L O G ® D A T A S H E E T



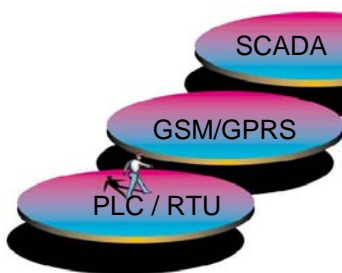
AutoLog® GSM-RTU Series (GSM-GW, GSM-4, GSM-8, GSM-16, GSM-20)

S O P H I S T I C A T E D ® A U T O M A T I O N

GSM-RTUs are remotely programmable through GSM network.

Many GSM-RTU models and features – fits exactly with your application!

Ready to use SCADA solutions for different kinds of applications.



Wireless Telemetry



### Introduction

AutoLog® GSM-RTU devices are designed especially to be used in applications where GSM/GPRS communication is needed. Programming is made very easy; build-in GSM/GPRS driver handles all the complex GSM communication tasks automatically so user can concentrate on application programming.

AutoLog® GSM-RTU can be programmed locally using a cable or remotely through GSM network using PC based programming tool or just GSM phone. GSM-RTU has many programming features that are useful in creating GSM applications, like incoming phone number identification etc.

AutoLog GSM-RTUs are based on well proven AutoLog technology. FF-Automation has manufactured AutoLog automation products since 1976. RTU devices are our main business area. AutoLog RTUs can be build to meet customer's specific requirements.

The world's biggest oil and gas producer companies trust their production on AutoLog RTU devices. List of AutoLog RTU references can be found from our web page.

AutoLog GSM-RTU



Manufactured by FF-Automation

THE AUTOLOG®FAMILY  
AUTOLOG®PLC AUTOLOG®GSM AUTOLOG®OEM  
AUTOLOG®RTU AUTOLOG®TETRA AUTOLOG®HMI



A U T O L O G ® D A T A S H E E T



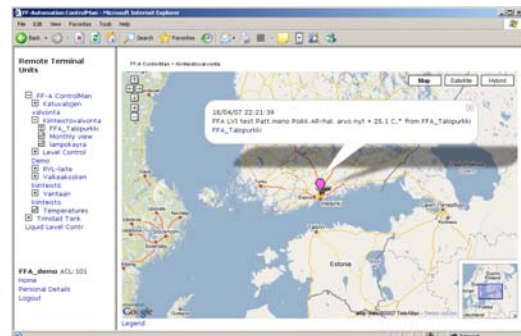
## AutoLog® GSM-RTU Series (GSM-GW, GSM-4, GSM-8, GSM-16, GSM-20)

### GSM-RTU Units

Model	GSM-GW Unit	GSM-4 Unit	GSM-8 Unit	GSM-16 Unit	GSM-20 Unit
Analog Inputs	-	-	2	8	8-32 (Expandable)
Analog outputs	-	-	-	-	2-34 (Expandable)
Digital inputs	-	4	4	4	8-72 (Expandable)
Digital outputs	-	-	2	-	8-72 (Expandable)
Relay outputs	-	2	2	4	0-64 (Expandable)
Free Serial ports	2	1	1	1	2 (one for external modem)
AL Serial Plug-in Module	Optional for free serial port(s). Allows e.g. RS-485, Modbus TCP, Wireless Sensor Network, WLAN for free serial port.				
GSM modem	Build-in			External	
I2C port	1 (HMI, iButton, etc.)			2 (HMI, iButton, other for I/O exp.)	
PID	32 build-in PID controllers				
Time-controls	clock & calendar based				
Data Logging	FTP file: e.g. 1 x 43000 Time-stamped records or 8 x 13000 Time-stamped records etc.				
Communication	SER1: GSM/SMS, GPRS/FTP, SER2: RS-232 Modbus Master/Slave, OPT: Modbus TCP M/S, Wireless Wi-Fi Sensor Network, WLAN				
Programming	Remotely through GSM network or locally using programming cable				
Power supply	12 / 24VDC or 10 / 18VAC or 115 / 230VAC max. 5VA, voltage drop alarm				
UPS	Yes for 12VDC battery (13.6VDC charging), voltage drop alarm and discharge protection, battery is optional			Needs optional external charger card.	
Operating temperature	-20°C...+65°C				
Storage temperature	-30°C...+85°C				
HMI	Optional. Default model AL1093F integrated. (Look picture) Many other models also. Can be mounted to the plastic enclosure.				
Enclosure	Default plastic IP65. (Look picture). Also Stainless Steel IP54 or as specified.				

### SCADA

OPTION#1:	AutoLog ControlMan (Look pictures)
OPTION#2:	Web Studio SCADA
OPTION#3:	Any other SCADA which supports ODBC interface.
Web support	All main control room views can be seen remotely from any PC in Intranet. Configurable user levels and firewall security.



AutoLog® ControlMan: dynamic map, alarms, trends, animated graphics, reports, SQL database, etc.



[WWW.FF-AUTOMATION.COM](http://WWW.FF-AUTOMATION.COM)

AutoLog® GSM-RTU systems are operating all over the world !



**FF-AUTOMATION**  
 Eräkuja 2, 01600 Vantaa, Finland  
 tel. +358 10 2190 500  
 fax +358 3 5846 711  
 e-mail: [info@ff-automation.com](mailto:info@ff-automation.com)  
 Web: [www.ff-automation.com](http://www.ff-automation.com)