



Features

- An innovative, self-contained, battery-powered locking device that utilizes GPS technology over GSM/GPRS networks to monitor container integrity.
- Each use of the device requires a single-use bolt that locks the SLM unit.
- A tamper alert is issued when the unit is unlocked or the cable is cut.
- The SLM stores and transmits every location/event. If out of cellular coverage (e.g., ocean voyage), the SLM stores all locations and events, and forwards them once back in coverage.
- The patent-pending cable locking mechanism allows reuse of the device. When used with a reusable drilled horizontal bolt and a single-use, mini strap seal, per shipment operating costs are minimized.

Additional Equipment

- Replacement Single-Use Bolt (SLM is sold with one single-use bolt)
- Reusable Drilled Horizontal Bolt (optional)
- Single-Use Mini Strap Seal (use with Reusable Drilled Horizontal Bolt)
- External Battery Charger

Flexible Deployment Scenarios

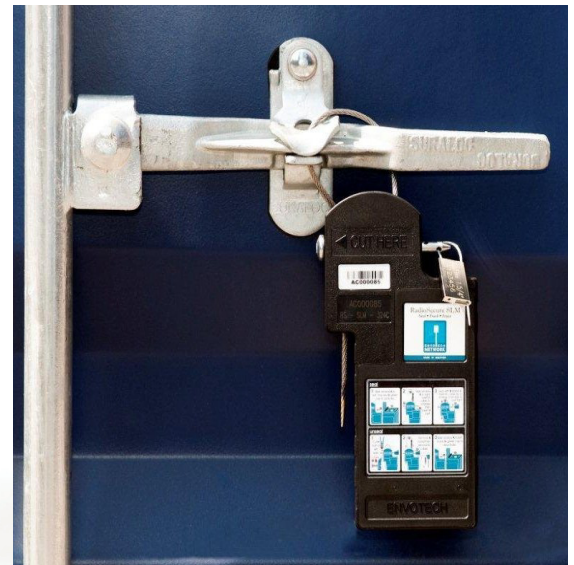
- Dock-to-border transit
- In-port security
- Cross border sealing after Customs review
- Distribution center security

SEALED CONTAINER INTEGRITY TRACKER

The Envotech RadioSecure SLM is a sealed container security device equipped with a tamper sensor and GPS technology. The SLM facilitates supply chain security by actively monitoring the integrity of a sealed container or trailer as it moves throughout the global supply chain. The SLM is configured to report tampering and location status via GSM/GPRS wireless infrastructure to FSNtracks, a web-based supply chain security and location visibility platform. In the event of unauthorized entry, unsealing or violation of any preset notifications, the SLM will initiate an immediate alert. Notification can be received by SMS or email.



Envotech RadioSecure SLM with Single-Use Bolt



Envotech RadioSecure SLM with Reusable Drilled Horizontal Bolt used in conjunction with a Single-Use Mini Strap Seal

Specifications

Size

- (H) 8.27" x (W) 4.13" x (D) 2.17"
- (H) 210 x (W) 105 x (D) 55 mm

Standard Lengths

- Cable: 19.69"/50 cm
- Bolt: 5.12"/13 cm

Weight

- 2.5 lbs/1.13 kg (with battery)

Battery Capacity

- 3.6V, 10.4 Ahr Lithium-ion rechargeable

Internal GPS Patch Antenna

GPS 16 Channel Mode

Radio & Network Modes

- 250 kbps GSM/GPRS/EDGE Quad Band
- ISM 2.4 GHz QFSK modulation

Break Load

- Cable: >1000 kgf; Bolt: >1500 kgf

Water Resistance & Environment

- Temperature: -30°C to +70°C, -22°F to 158°F
- Humidity: 95% (non-condensing)