



Industrial 6-Port Unmanaged Fast Ethernet Switch

■ ■ EH2306

RoHS compliant

Technology

- 10/100BaseT(X) (RJ45)
- Broadcast storm protection
- Support IEEE 802.3/ 802.3u/ 802.3x
- 10/100M, Full/Half-Duplex, MDI/MDI-X auto-detection

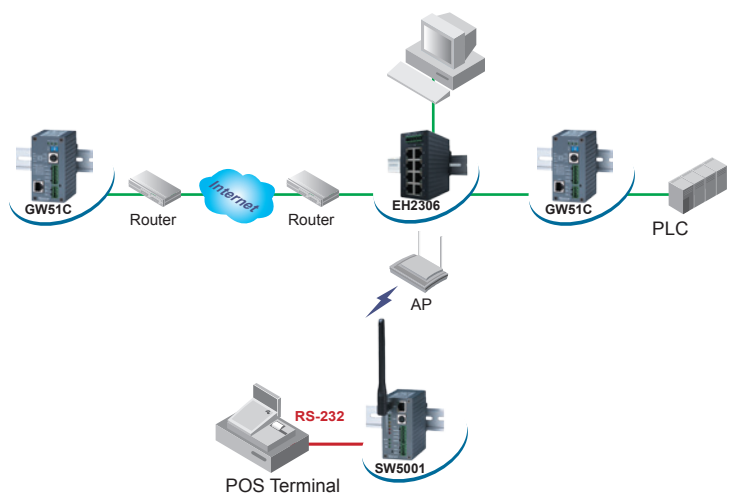
Reliability

- Redundant dual DC power inputs
- Operating temperature ranges from -10~70°C
- Rugged high-strength housing
- DIN-Rail or wall mounting ability

The EH2306 with 6 RJ-45 ports has a metal housing and is designed to work in the industrial environment, such as in hazardous locations that comply with CE, FCC, UL and RoHS standards.

The EH2306 protects itself from receiving too many broadcast packets. During normal use, broadcast packets will be forwarded to all ports except the source port. However, it will discard broadcast or multicast packets if the number of those packets exceeds a threshold in a preset period of time. When the preset period expires (about 800ms), it will then resume receiving broadcast or multicast packets until the threshold is reached again.

The EH2306 provides two redundant power inputs that can be connected simultaneously to wide-range DC power sources. If one of the power inputs failure, the other live source acts as a backup to provide the EH2306 the power it needs automatically.



Industrial 6-Port Unmanaged Fast Ethernet Switch



Specifications

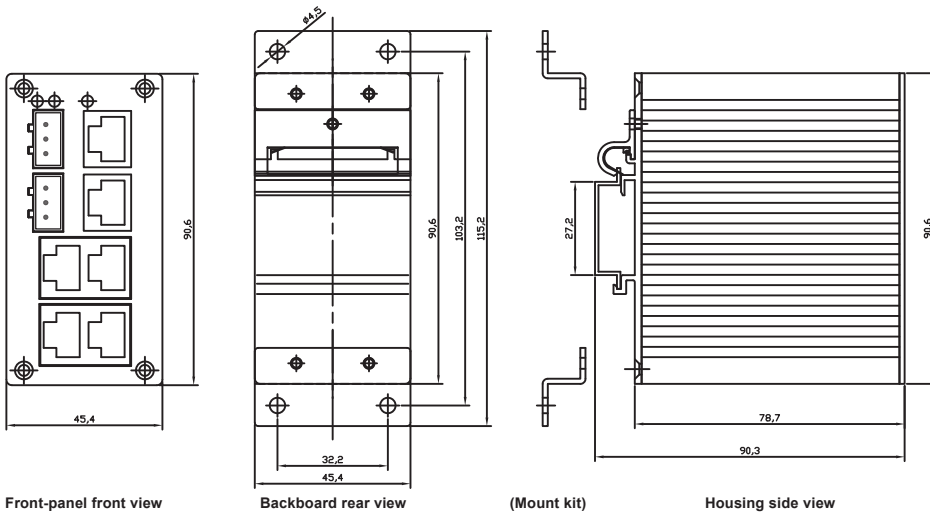
Technology	Standards: IEEE802.3, 802.3u, 802.3x
	Processing Type: Store and Forward
	Flow Control: IEEE802.3x flow control, backpressure flow control
Interface	RJ45 Ports: 10/100BaseT(X) auto negotiation speed
	Full/Half-duplex mode, and auto MDI/MDI-X connection
	LED Indicators: Power, 10/100M, Fault
Power Requirement	Input Voltage: 9~30 VDC, Dual inputs
	Consumption: 4.5 Watts Max
	Connector: Removable 3-pin Terminal Block for power input
	Reverse Polarity Protection: Present
Physical Characteristics	Housing: IP50 protection, metal housing
	Dimension: 45.2mm x 90mm x 78mm (W x H x D)
	Weight: 255g
Environmental Limits	Operating Temperature: -10°C ~ 70°C (14°F ~ 158°F)
	Storage Temperature: -40°C ~ 85°C (-40°F ~ 185°F)
	Ambient Relative Humidity: 5%~95% non-condensing
Regulatory Approvals	UL(Safety): UL60950-1,CSA C22.2 No.60950-1-03
	FCC(EMI): FCC 47 CFR Part15, Subpart B, Class A
	ICES-003, Class A
	ANSI C63.4-2003
	CE(EMI): EN 55022:1988+A1:2000+A2:2003, Class A
	EN 61000-3-2:2000, Class A
	EN 61000-3-3: 1995+A1:2001
	CE(EMS): EN 55024:1998+A1:2001+A2:2003
	IEC 61000-4-2:2001
	IEC 61000-4-3:2002+A1:2002
	IEC 61000-4-4:2004
	IEC 61000-4-5:2001
	IEC 61000-4-6:2003+A1:2004
	IEC 61000-4-8:2001
	IEC 61000-4-11:2004
	Shock: IEC 60068-2-27
	Free Fall: IEC 60068-2-32
Vibration: IEC 60068-2-6	
RoHS: Lead(Pb) Free	
MTBF: 455736 hrs(25°C) / 52.02 years(25°C)	
Warranty: 5 years	

Optional Accessories

US315-12(US/EU) : AC100~240V/DC12V ; 5.08mm pitch terminal block

DIN-Rail mount, Wall mount

Mechanical Dimensions(unit=mm)



Ordering Information

Model Name	Port Interface			
	10/100BaseT(X)	100BaseFX		
Extended Temperature (-10°C ~ 70°C)		Multi Mode ST Connector	Single Mode SC Connector	
EH2306	6	----	----	

Atop Technologies, Inc.

TEL ☎ +886-3-5508137
 FAX ☎ +886-3-5508131
 sales@atop.com.tw
 http://www.atop.com.tw

Design and specification are subject to change without notice.

All product names referenced herein are registered trademarks of their respective companies.

