

# SBC3 CAN

The robust and reliable tracking unit for advanced telematics applications



**SBC3 CAN** focuses on professional tracking and tracing applications for vehicles with CAN bus, RS232 interface and basic I/O functions.

Configuration parameters (examples):

- Event reporting (time, distance, direction, ignition etc.)
- Provider list with roaming pre-selection
- Flexible I/O configuration
- Optimized for log book functions with very accurate mileage counter
- Different sleep and power saving modes

Event messages contain information about (examples):

- Position with time stamp
- Message type (e.g. direction change) with time stamp
- Mileage counter
- Speed
- Maintenance and service data (number of satellites, voltage value)
- Motion detection

Project specific variants & options:

- Project specific protocol implementations

Application segments:

- Automated Vehicle Location (AVL): fleet management, construction machines, public transport organization
- Telematics applications for trucks, trailers, construction machines and fleets

# Telic

Telematik & Telemetrie

## SBC3 CAN

Technical Parameters:

- Water-protected, robust housing (glass fibre reinforced)
- All antennas integrated
- CAN interface (FMS support)
- RS232 port for diagnostics
- Rs232 port for peripherals
- 1-Wire® interface
- 2x digital inputs
- 1x analog input
- 1x digital output
- 3-level watchdog concept incl. power cycle
- Software upgrade over the air (DOTA)
- Configuration via config tool or SMS
- Fixed reporting time

Power Supply:

- LiPo battery backup
- 7 to 32V input range

Temperature Range, Certificates:

- Temperature range -30°C to +75°C
- CE certification
- E-certification
- FCC certification
- Made in Germany

Optional Available for Projects:

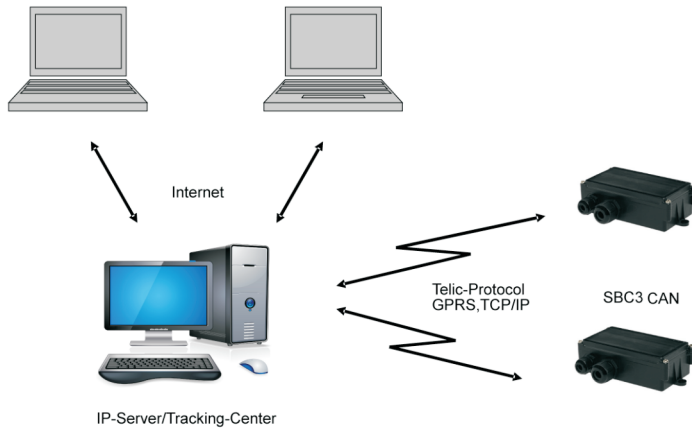
- Telic camera interface
- Board extension such as WLAN or Bluetooth
- Additional digital inputs and outputs

# SBC3-CAN - Reliable Tracking for Advanced Telematics

## Use of SBC3 CAN for Telematics Services

### Telic protocol integration:

Telic discloses the communication protocol to customers who develop their own control center software. Under NDA Telic provides all information to integrate Telic products into the telematics solution. Within our partner program we offer trainings, tools and support through the whole integration process.



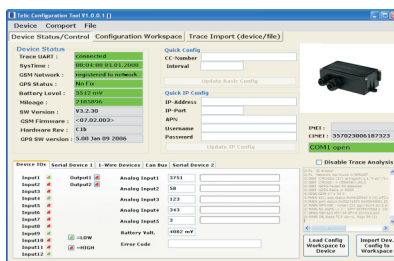
### Use of existing control center solutions from Telic partners:

Telic works together with a wide range of telematics service providers, which have successfully integrated the Telic protocol. Depending on the required telematics service (e.g. fleet management, asset tracking, personal tracking, etc.), we can find the right partner for your needs. Please contact us for further information.

## Configuration and Diagnostic Tool

Telic's PC-based configuration tool supports the solution partner during the integration process and offers features such as:

- Direct connection via RS232
- Configuration of all relevant parameters
- Display of current status
- Trace and monitoring of device status
- Diagnostic of the device
- Software download to the SBC3 CAN



## Android App for Smartphones

- Helps customers to easily find configuration errors, e.g. wrong APN
- Reduces support effort
- Displayed information:
  - Software version with option for upgrade
  - APN
  - Battery level of device
  - Settings of the device

## About Telic

Telic is a leading German supplier of telematics and telemetry products. Based on the core technologies GSM and GPS, Telic develops and manufactures high quality products, designed to be used in industrial and automotive environment. Telic's strong partnership with GSM and GPS module manufacturers secures the competitive edge in GPS, GPRS, and UMTS technologies.

By using a platform concept, Telic is able to react flexibly and fast to customers' requirements. This leads to cost-efficient solutions for system integrators and solution providers.

## Telic Product Portfolio

- **Picotrack** is a very small and compact GSM/ GPS tracking and alarming device for security applications as well as tracking of people and goods.



- **Picotrack Endurance** is the extremely robust and autonomous GSM/ GPS container and asset tracker with ultra-long battery life with primary or rechargeable battery cell option.



- **SBC-AVL** is a black box for vehicles with extremely low power consumption. The integrated high-performance GSM / GPS antennas drastically reduce the cost of installation.



- **STD32 and STD35** are the cost-efficient platform for telemetry applications, providing a ready-to-start hardware and an integrated web-server.



## How to contact us

Telic GmbH  
 Raiffeisenallee 12b  
 D-82041 Oberhaching/ Germany  
 Phone: +49 89 490 2686 - 0  
 Fax: +49 89 490 2686 - 18  
 Internet: www.telic.de  
 E-Mail: info@telic.de



V. 1.0, February 2013

Telic GmbH may at any time and without notice make changes or improvements to the offered products and services.