

# InRouter700 Series Quick Guide

---

Second Edition, March 2013



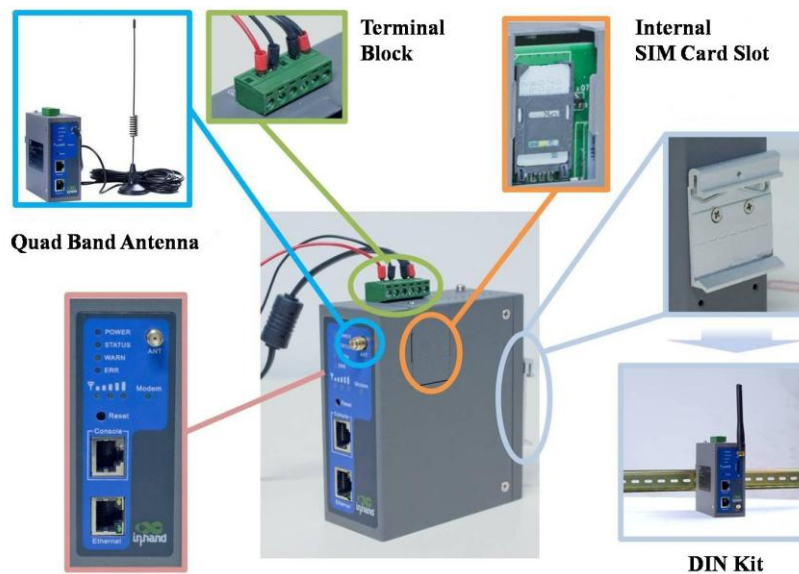
© 2013 InHand Networks, All rights reserved.  
Republication without permission is prohibited.

# Overview

This document is used to guide customer installing and operating InRouter700 Series industrial router which researched and developed by InHand Networks. Please make sure the product model and the accessories in the packaging (like power supply, antenna) before using. If you need buy SIM card, please consult the local operators.

## Panel Layout

### InRouter7x1:



### InRouter7x4:



# Quick Connection to Internet



**Notice: all the operation should be carried out when InRouter keep interruption of power supply.**

## Step 1: Preparation



Insert SIM Card



Antenna Installation



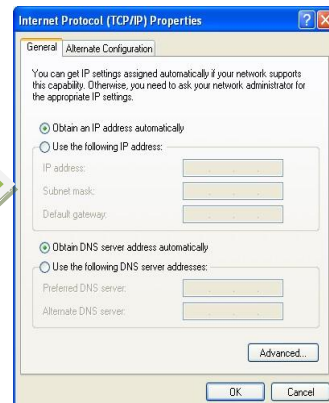
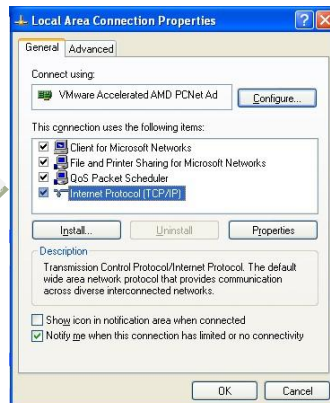
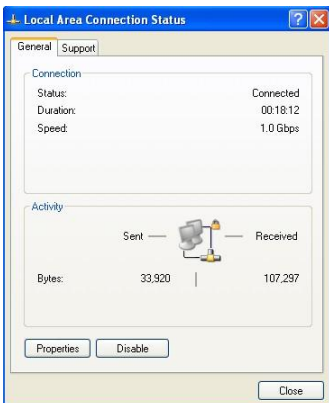
Connection with PC



Power Supply

## Step 2 First Connect InRouter700 with Your PC

InRouter700 can auto-distribute IP address for PC. Please set the PC to automatically obtain IP address via DHCP. (Based on the Windows Operation System):



Open "Control Panel" → "Network Connections", then enter "Local Area Connection Status" screen.

Click "Properties", enter "Local Area Connection Properties" screen.

Choose "Internet Protocol (TCP/IP)", click "Properties" button to choose "Obtain IP address automatically."

### Step 3: Start to configure your InRouter700 (Optional)

After you have finished the former steps, you can configure the InRouter:

**Router Login**

Username

Password



**InHand Networks**

System **Network** Services Firewall QoS VPN

LAN

MAC Address DNS 18:05:00:78:D7

IP Address DDNS ? 168.2.1

Netmask Static Route ? 255.255.0

MTU Default 1500

Detection host 0.0.0.0

Open IE browser, input the default IP address of the InRouter:  
**“http://192.168.2.1”**. Input “username” (default: **adm**) and the “password” (default: **123456**), and then click “login”

Change the IP configuration:  
 If you want to change the IP address of InRouter700, click “Network”→“LAN”, change the IP address you need.

**Notices:**

- 1 Please click “apply” to activate your configuration after finished configuration.**
- 2 You need set your PC in the same subnet after resetting new IP address.**

### Step 4: Connect InRouter with Internet

Following the configuration steps below to enable InRouter700 to connect to Internet.

**InHand Networks**

System Network **Services** Firewall QoS VPN Tools Status

**Dialup**

Enable

Time schedule [ALL] Schedule Management

Shared Connection (NAT)

Network Provider (ISP) Custom

APN uninet

Access Number \*99\*\*1#

Username gprs

Password \*\*\*\*

Primary Profile Retries 0 (0: always)

Network Select Type Auto

Band ALL

Static IP

Connection Mode Always Online

Redial Interval 30 Seconds

Show Advanced Options



Click “Network”→“Dialup”, enter dialup configuration web. **Please check the APN, Dialup Number, Username and Password.**

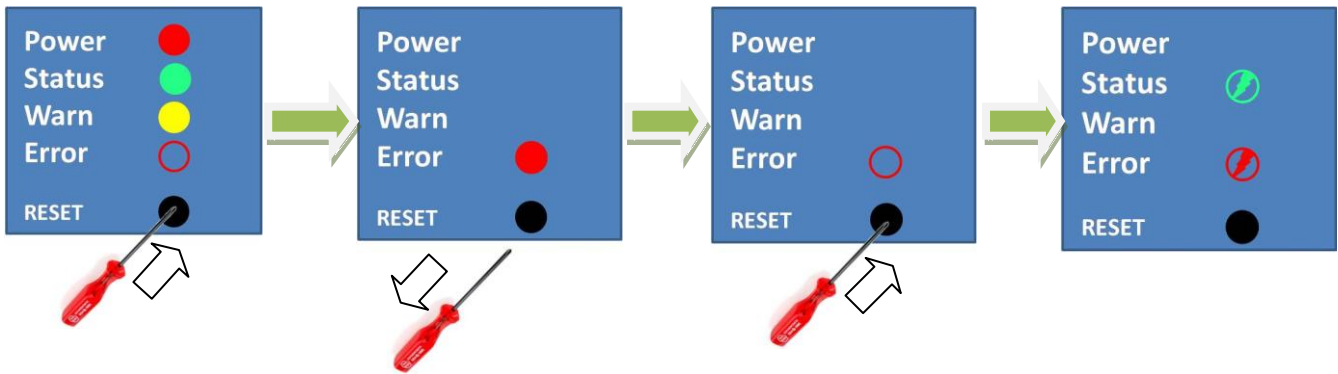
Dialup Number, Username and Password are provided by local mobile operator.

After correct configuration, InRouter700 can now connect with Internet. Open IE Browser, input [www.google.com](http://www.google.com), you can access the Google home page.

# Reset to Factory Defaults

## Hardware Method

Legend: On--● Off--○ Blink--⚡



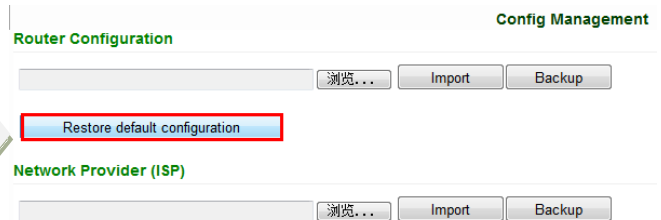
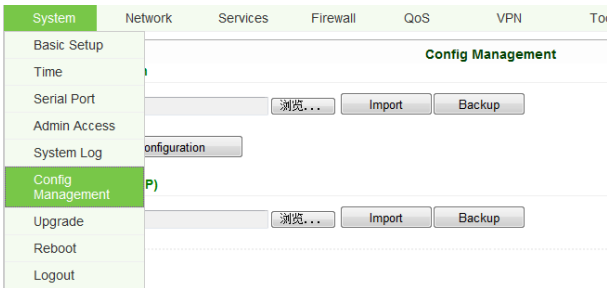
Press and hold RESET button while turning on IR700.

When you see ERROR LED turns on (about 10 seconds after power on), release the RESET button.

After a few seconds, the ERROR LED will turn off, now press RESET button again.

Then you will see ERROR and STATUS LED blink, which means reset to factory defaults succeed.

## Web Method



Login the web interface of InRouter700, Select “System”→“Config Management”

Click “Restore default configuration”.

**Notice: After restore default configuration, please REBOOT device.**

# Description of LED

## Description of LED panel

Legend: On--● Off--○ Blink--⚡



Power on



Start to run firmware



Begin dial to Internet



Connect to internet



Upgrading firmware



Restore factory default

## Description of Signal Status LED



● ○ ○ ○ ○ ○ ○ ○ ○ ○ ----- Signal: 1-9 (bad signal level, route cannot work, please check the antenna and local signal level)



● ● ● ● ● ● ● ● ● ● ○ ----- Signal: 10-19 (Router work normally under this signal level)



● ----- Signal: 20-31 (Perfect signal level)

Copyright © 2013 InHand Networks, All rights reserved.

Tel: +86-010-64391099

Fax: 86-10-64399872

Address: Wangjing Science Park, Road Lizezhonger, Chaoyang District, Beijing, P. R. C, 100102

Website: <http://www.inhandnetworks.com>

Email: [info@inhandnetworks.com](mailto:info@inhandnetworks.com)

**Subject to alterations without notice.**

