



Wireless Metering Solution Itron + Sierra Wireless

AirLink Intelligent Gateways

Integrated with Itron's Advanced Metering Platform



POWERED BY ALEOS

AirLink Raven XE



Itron CCU 100



REAL TIME USAGE INFORMATION FOR UTILITY CUSTOMERS

By integrating the AirLink Intelligent 3G Gateways into their CCU 100, Itron provides two-way cellular communications for their advanced data collection solution. The Sierra Wireless AirLink Raven X and Raven XE Intelligent M2M Gateways provide the cellular connection in Itron's CCU 100, a key component of Itron's advanced fixed network platform.

ITRON FIXED NETWORK COLLECTOR CCU 100

The CCU 100 (also known as a collector) is the main collection point for Itron's Fixed Network and reads data from Itron electricity meters, gas and water endpoints. The new CCU 100 gathers consumption, daily or hourly meter reads, and other information from endpoints and communicates it back to the utility over a public or private network. When used with the Fixed Network Repeater 100 the coverage territory per CCU 100 is extended. It also manages the collection, processing and storage of endpoint data and can support two-way functionality to the endpoint. Equipped with a backup battery, the CCU100's adaptable design allows for a wide range of installation options, utilizing either AC or solar power.

ABOUT ITRON'S SOLUTION FOR ADVANCED DATA COLLECTION

Advanced data collection from Itron offers energy and water utilities a wide array of operational, customer service and asset management benefits.

Itron offers a suite of data collection technologies built on its proven ERT® platform for an array of flexible meter reading options. Itron's advanced data collection solutions can be deployed in the right combination, at the right cost, based upon specific needs with the flexibility to meet evolving business requirements - all while retaining the same electric, gas and water endpoints in the field.

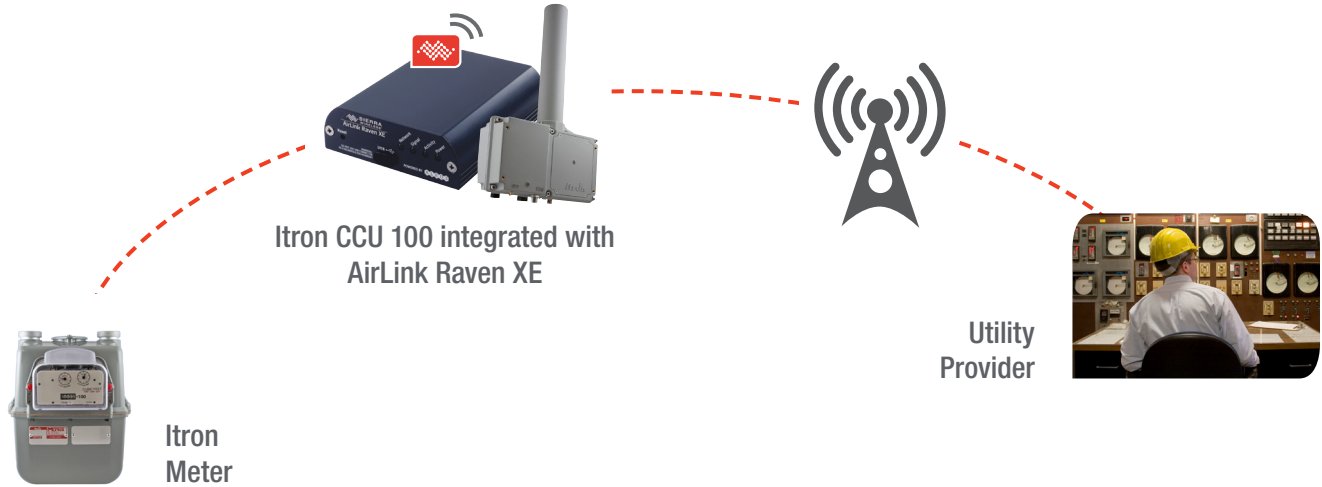
SECURE, RELIABLE CONNECTIVITY

By leveraging the AirLink line of intelligent gateways and routers, Itron has ensured their customers with a reliable, secure wireless option for their energy management solution. AirLink devices are integrated with ALEOS™ embedded intelligence. In addition to offering over 500 configurable parameters and over-the-air updates, ALEOS ensures a highly persistent connection and a vast library of machine and security protocols. With the Itron/Sierra Wireless solution, customers can deploy a wireless energy management solution with the peace of mind that they will have an always-on and secure connection.



How it Works:

The Itron CCU 100 integrated with AirLink intelligent gateways for a reliable energy management solution:



About Itron:

Itron is the leading provider of energy and water resource management solutions for nearly 8,000 utilities around the world. We offer end-to-end solutions that include electricity, gas, water and heat measurement and control technology; communications systems; software; and professional services. With nearly 10,000 employees doing business in more than 130 countries, Itron empowers utilities to responsibly and efficiently manage energy and water resources. To realize a sustainable future, start here: www.itron.com



Features + Benefits:

- Concurrently read electric, gas and water endpoints and enhanced monitoring systems
- Rapidly deployable cellular solution, eliminates the need for wired infrastructure or private radio network
- ALEOS enables comprehensive configuration and management from anywhere
- Remote system diagnostics and support
- Lower operations and maintenance costs due to deployment flexibility, low cost per point, reduced field service visits and tamper analytics
- Extending the data collection capabilities beyond the meter with enhanced monitoring technologies
- Rugged equipment allows deployment in extreme and hazardous environments

How to Buy:

For more information on deploying an energy management solution with Itron powered by Sierra Wireless, contact Sierra Wireless at AirLinkSales@SierraWireless.com.

For More Information

AirLink Sales:
Tel: +1 510 624 4200

Itron Sales:
www.itron.com/ContactUs

www.sierrawireless.com
www.itron.com



The AirLink Advantage

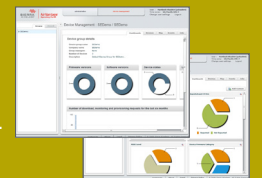
RUGGED INTELLIGENCE

ALEOS™ embedded intelligence powers AirLink devices and supports 24/7 always-on persistent connectivity, secure real-time, two-way data exchange.



REMOTE MANAGEMENT

AirLink Management Services (AMS) is a comprehensive hosted one-to-many remote device management tool. Its feature rich capabilities allow customers to remotely update firmware, check device status, schedule commands and much more.



Together, ALEOS and AMS provide a cloud solution that requires minimal set-up for a simplified deployment.