



**ConnectM**  
*a Sasken and IDG Ventures company*

## ConnectM Corporate Overview

*To be a leading global M2M technology Solutions & Services company*



## Key Facts

- 80+ Man years of M2M expertise
- 60,000+ assets managed by our M2M platform
  - Telecom Towers: 30,000 assets
  - Enterprise Buildings: 25,000 assets (3 Mn sq. ft. Energy Mgmt)
  - Others: Construction, Industrial, Utility, Fleet, Roads
- 30+ customers: 75% customers are big multinational corporations
- Winner of Logica's India Innovation Partner award
- Winner of IBM Smart Camp for innovative start-ups
- Patent pending technology
- Ready to use M2M frameworks and components.
- Global Investors: IDG, Sasken



## Sasken Communication Technologies and IDG Ventures India



- ▶ Sasken is a Telecom R&D Services major
- ▶ 3500+ people, 200M\$ in Revenue
- ▶ Listed on BSE and NSE in India



- ▶ 150M\$ early stage VC Fund
- ▶ Global network of 220 invested companies, 1B\$
- ▶ 9 companies in the India portfolio

## ConnectM, Members of the Board

### Rajiv Mody, Chairman of the Board

- ▶ Chairman and CEO, Sasken
- ▶ Founded Sasken in 1989
- ▶ Sasken is now a 200M\$ public-listed company

### Dr G Venkatesh

- ▶ Executive Director & CTO/CSO, Sasken
- ▶ His role at Sasken has spanned from Technology, Engineering, Telecom and as head of the Product Division of Sasken

### Sudhir Sethi

- ▶ Founder, Chairman & Managing Director, IDG Ventures India
- ▶ Leading venture investor in technology space in India; On the Board of Global Indian VC Association and UTI Ventures; Member NASSCOM Regional Council; DQ "Top 10 IT Professional"; Red Herring Top 5 Venture Investor; Seed investor and Board Member Mindtree Consulting; Served on Board of Infotech Enterprises.

### T C Meenakshisundaram

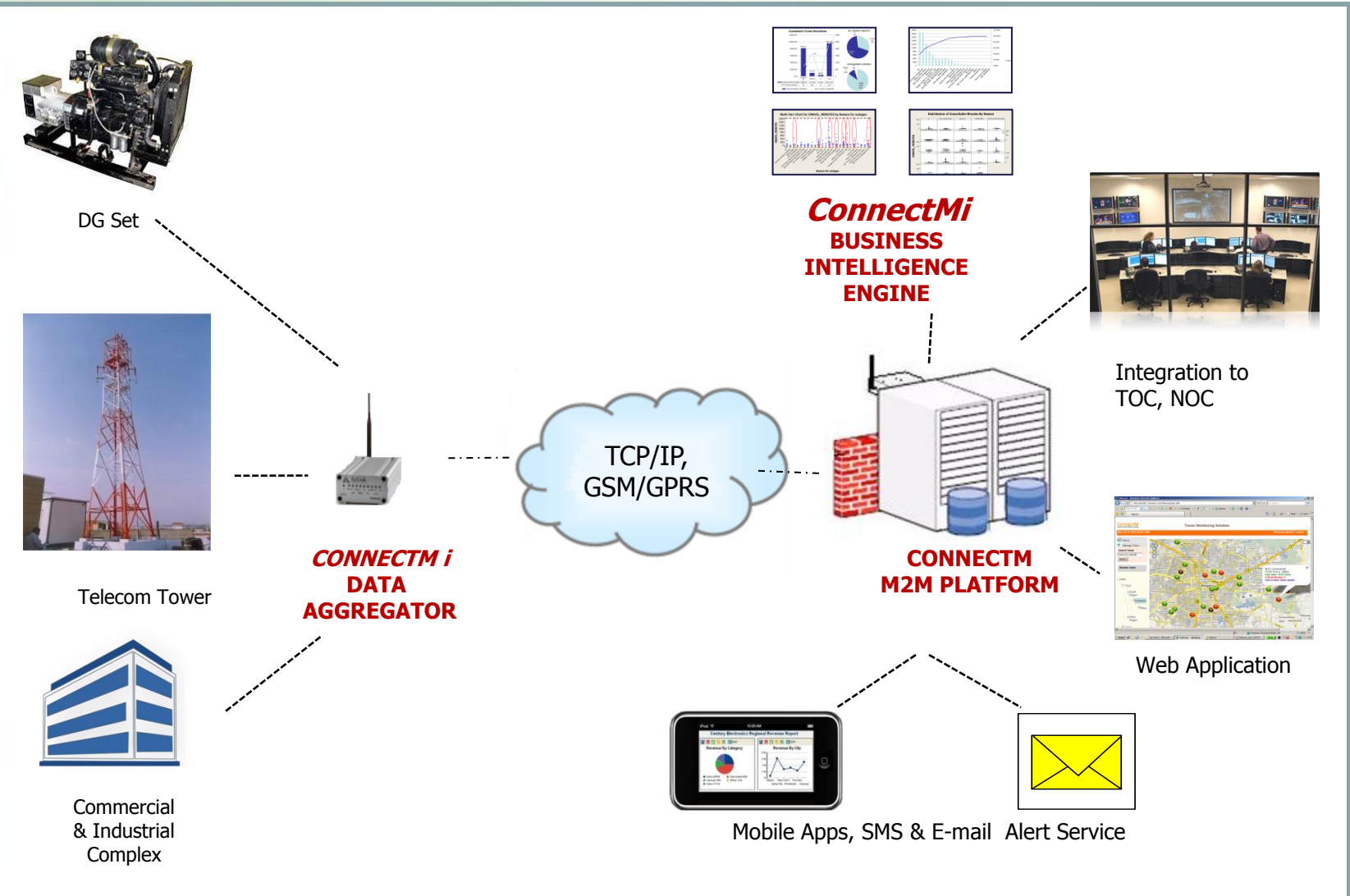
- ▶ Founder, Managing Director, IDG Ventures India
- ▶ Formerly, Chief Financial Officer and President of Corporate Services at Venture Infotek, a leading payments processing company in India



# M2M Solutions Overview

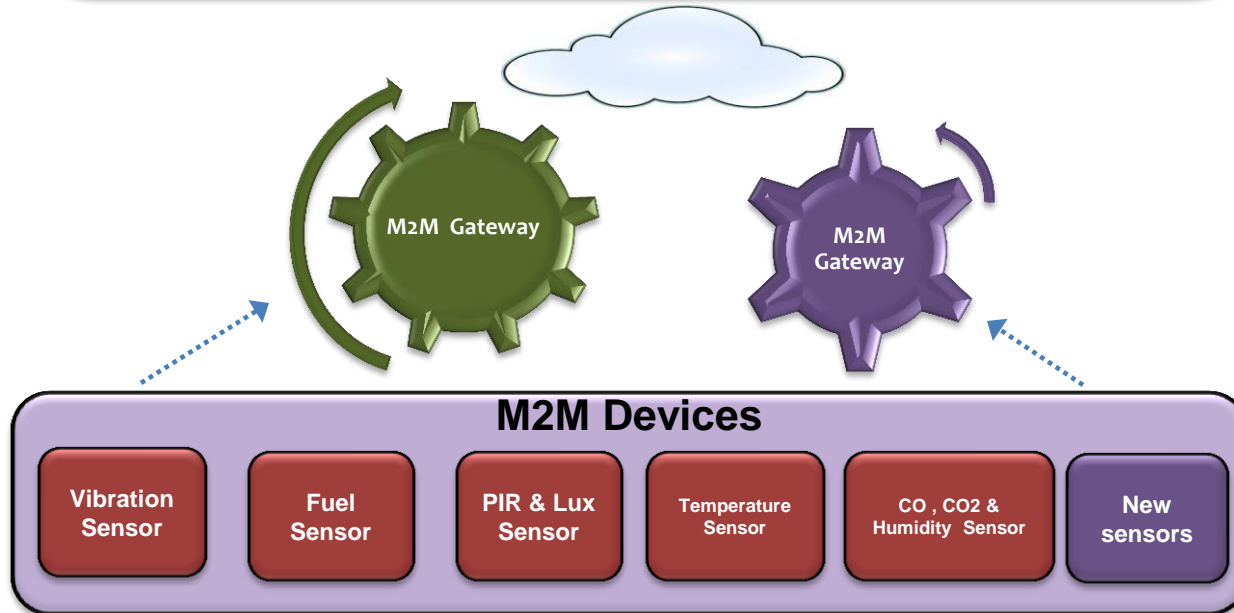
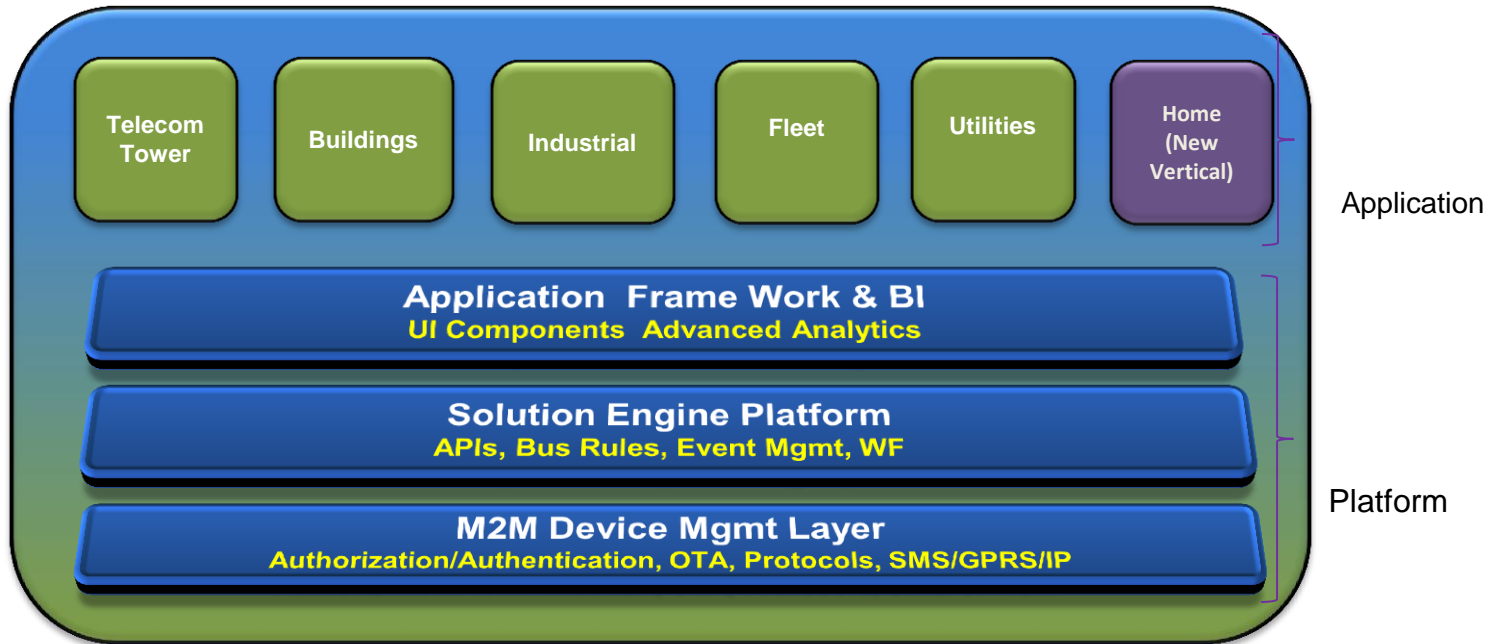


# Typical M2M Solution



Enhance productivity | Improve utilization of assets | Maximize availability  
Minimize operating cost | Optimise energy consumption

# ConnectM M2M Solution Offering Overview



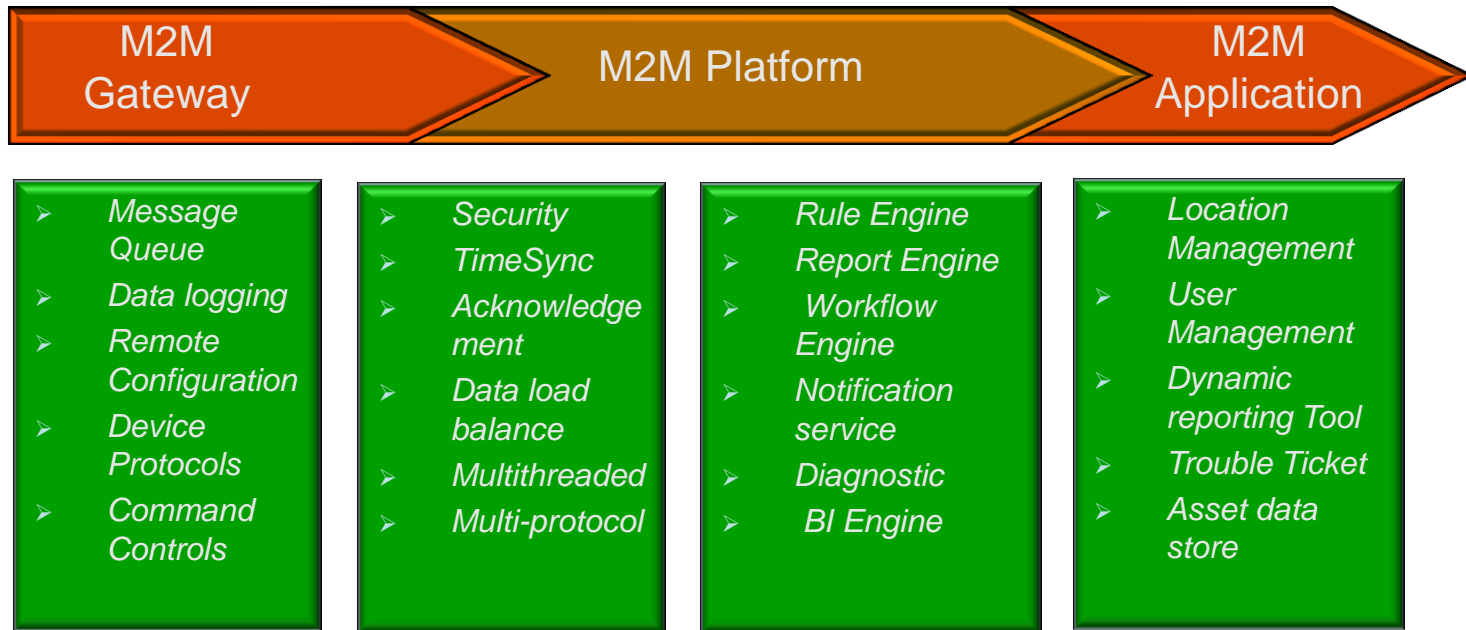


ConnectM – M2M Solution  
Platform





# M2M Solution Platform & Technology Stack



## M2M Gateway:

- Sierra Wireless Modem for GSM/GPRS
- ARM, PIC and Atmel(Microcontroller)
- ZigBee for wireless Communication

## Platform & Application:

- SOA Governance
- Platform agnostic to middleware's technologies
- Built on Java, JEE
- ESB - message-oriented and event-driven integration

# M2M – Instrumentation Framework

- **Proven data acquisition modules using various sensors like:**
  - Fuel
  - Temperature, Humidity, CO, CO2
  - Energy Meters(AC&DC)
  - RFID Tags, I-Button
  - Digital Signals
  - Vibration
  - Battery Voltage/Current
  - Pressure, Flow
  - GPS
  - PIR , Lux
- **Reliable Data access using standard protocols MODBUS, CAN, PROFIBUS etc.,**
- **Focus on Innovative technology:**
  - Wireless sensor networking
- **Strong partner network for providing customized M2M requirements**





M2M Solutions

# ConnectM portfolio of M2M Solutions

## Industry Verticals

Construction		Packaging		Fleet		Home
	Telecom Towers		Banking		Highways	
Mechanical		Utilities		Office Buildings		

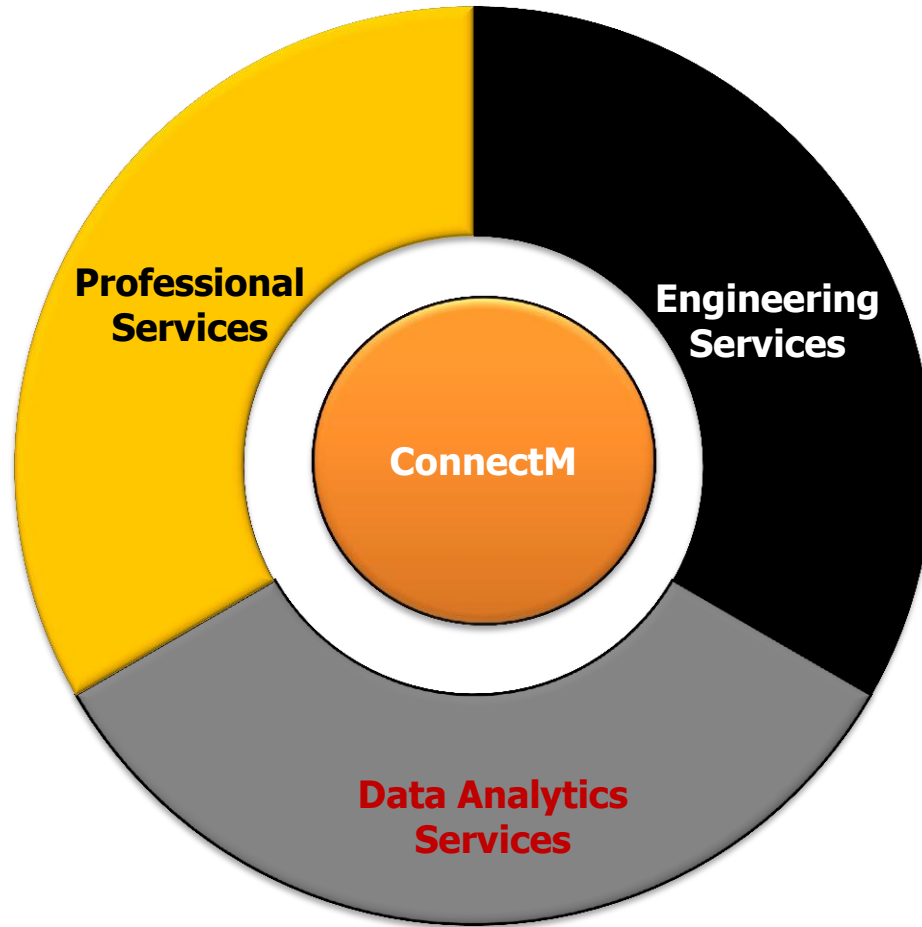
## Readily Available Solutions

- Remote Monitoring of Telecom Towers
- Remote Monitoring of DG Set & Energy Management
- Remote Monitoring of UPS/Batteries
- Automated Meter Reading for Water, Energy and Gas meters
- Fleet Management Solution
- Remote Monitoring and Energy Management for Bank ATMs
- Wireless Energy – Building Management System (EBMS)
- Remote Monitoring of Industrial Assets (Cranes, Batching Plants, Chemical Plants)





M2M Services



# Professional Services

- **Data Management**
  - ✓ Data Hosting Services
  - ✓ Data Integration Services
  - ✓ Protocol Integration Services
- **Consulting & Implementation**
  - ✓ Architecture, Sizing, Deployment strategy
  - ✓ Platform & Application customization services
  - ✓ Energy Audits
  - ✓ Implementation Services
- **ODC Services**
  - ✓ Shared ODC
  - ✓ Dedicated ODC
- **Managed Services**
  - ✓ 24x7 Control Room Manning
- **Trainings**
  - ✓ Standard Classroom
  - ✓ Customized Courses

# Technical Competency Matrix

## M2M Solutions

### Energy Management

- Wireless ems
- Wireless Energy management System
- Enthalpy Free cooling system
- e-Metering

### Remote Monitoring

- Telecom Tower Monitoring
- DG Monitoring
- UPS & Server room Monitoring
- Industrial Crane Monitoring, SCADA

## Application

### Languages & Framework

- |            |             |
|------------|-------------|
| ✓ Java     | ✓ Spring    |
| ✓ JEE, EJB | ✓ Struts    |
| ✓ JSP      | ✓ JS, HTML  |
| ✓ Servlets | ✓ Hibernate |

### Integration & network framework

- |              |              |
|--------------|--------------|
| ✓ Javax.comm | ✓ JMS        |
| ✓ Jamod      | ✓ REST, SOAP |
| ✓ java.net   | ✓ ESB , SOA  |
| ✓ SNMP4J     | ✓ SMTP       |

### Middleware

- ✓ WEB2.0:AJAX,AdobeFlex, BlazeDS
- ✓ Application servers : WAS, JBoss
- ✓ BI, Reports: BRIT, Pentaho, Jasper
- ✓ Database : MySql, DB2
- ✓ Drools, Quartz, JQuery, etc..

## Embedded

### Comm. Protocol

- |               |              |
|---------------|--------------|
| ✓ GSM,GPRS    | ✓ TCP/IP,FTP |
| ✓ MODBUS      | ✓ ZigBee     |
| ✓ RS232,RS485 | ✓ I2C, SPI   |

### Platform

- ✓ Wavecom
- ✓ ARM9
- ✓ PIC24
- ✓ PIC16

### IDE

- ✓ VC++
- ✓ Eclipse
- ✓ MPLAB
- ✓ Keil C

### Device Driver

- |                           |            |
|---------------------------|------------|
| ✓ RTC                     | ✓ SD card  |
| ✓ EEPROM                  | ✓ Dual SIM |
| ✓ ADC                     | ✓ LCD      |
| ✓ Keypad                  |            |
| ✓ GSM, GPRS and GPS Modem |            |

## Sensor Integration

### Sensors

- |               |                |
|---------------|----------------|
| ✓ Fuel        | ✓ Motion       |
| ✓ Vibration   | ✓ Lux          |
| ✓ Temperature | ✓ CO2          |
| ✓ Smoke       | ✓ CO           |
| ✓ Proximity   | ✓ Humidity     |
| ✓ Read Switch | ✓ Limit Switch |

### RS485 Devices

- |                      |        |
|----------------------|--------|
| ✓ AC Energy Meter    | ✓ RFID |
| ✓ DC Energy Meter    | ✓ PLC  |
| ✓ Free Cooling Unit  | ✓ VFD  |
| ✓ Glo Master         | ✓ VAV  |
| ✓ Battery Monitoring |        |

### Devices

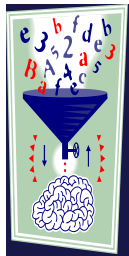
- ✓ Button (One wire Communication)
- ✓ Door lock interface
- ✓ Camera interface



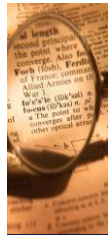
# Engineering Services

- ✓ **Solution Design and Development**
  - ✓ Application Software
  - ✓ Embedded Software
- ✓ **Validation and Verification**
- ✓ **Ready to use M2M frameworks and components:**
  - ✓ M2M data store
  - ✓ Data acquisition via Socket, SMS, MQ, SNMP, REST
  - ✓ Event Processing Engine
  - ✓ Rules Management
  - ✓ Workflow Management
  - ✓ Asset Management
  - ✓ Alert Notification (SMS/Email/IVRS)
  - ✓ Trouble Ticketing
  - ✓ Rich and interactive dashboards

## Analytics Solution – Superior Value Proposition



Extract all relevant data from equipment and systems



Validate data to ensure accuracy and completeness



Cleanse data to eliminate discrepancies  
Classify data to a common taxonomy



Enhance data with related information



Analyse data to prepare relevant reports and identify trends

Data Management

Alerts

Reports & Dashboards

What if Analysis

Trends / Patterns

Forecasting



## ConnectM Differentiators

## Commitment & Focus

- Strong investor support – Sasken, IDG Ventures
- Experienced management team.
- ConnectM is a pure-play M2M company.

## People, Technology, Innovation & Scalability

- Team with 100+ ManYears of M2M technology expertise
- Innovation-led adaptive approach to changing business & technology needs.
- Innovative Application Framework to quickly build new applications
- Have a roadmap for building new applications/solutions
- Technology agnostic – open architecture, integrating best-in-class across multiple vendors.
- Can connect seamlessly with a variety of Field Devices and Gateways
- Scalable Software Platform
- Ecosystem Partnerships

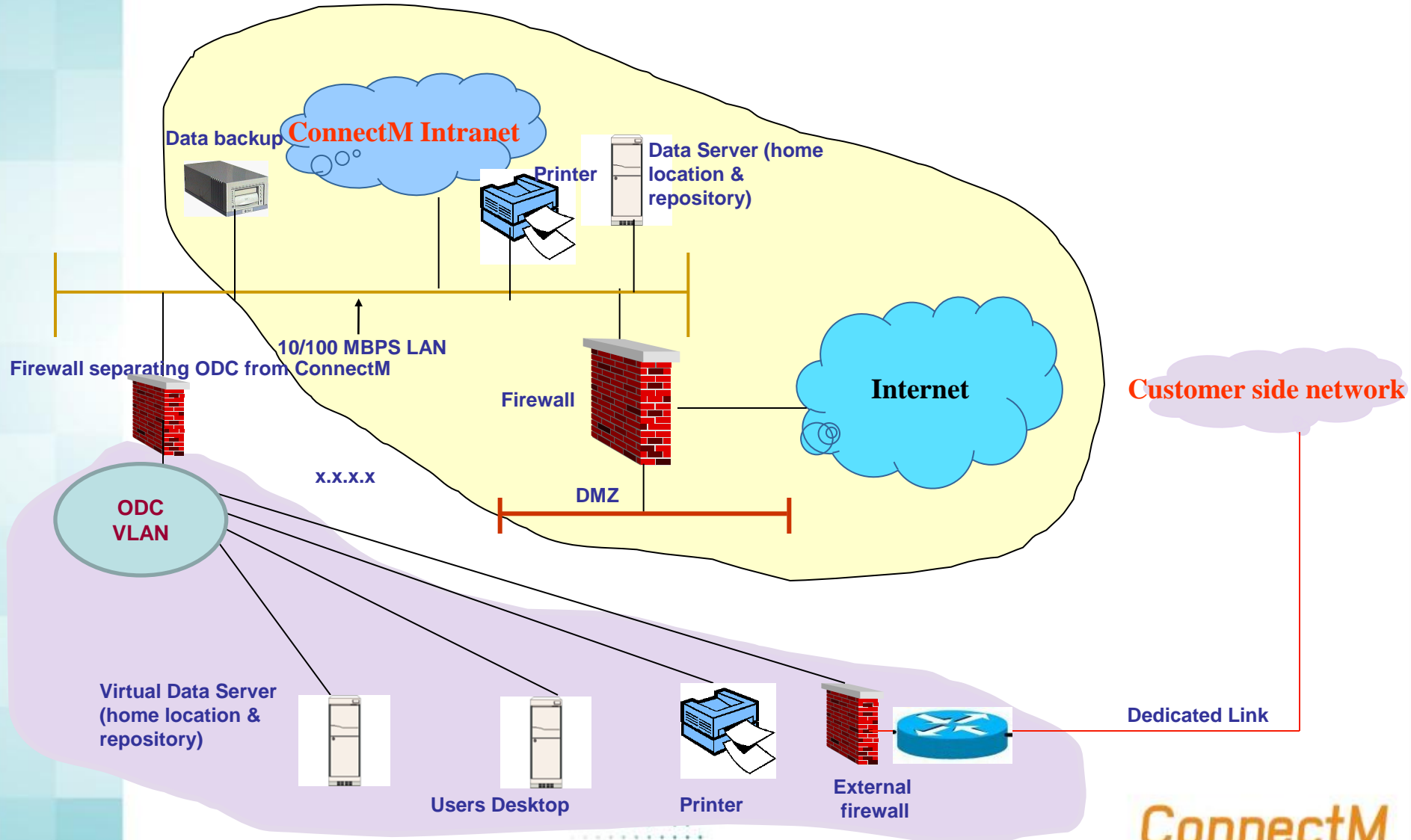




**ConnectM**  
*a Sasken and IDG Ventures company*

Offshore Development Centre (ODC)  
- Operating Models

# Secure ODC Model with Shared Infrastructure

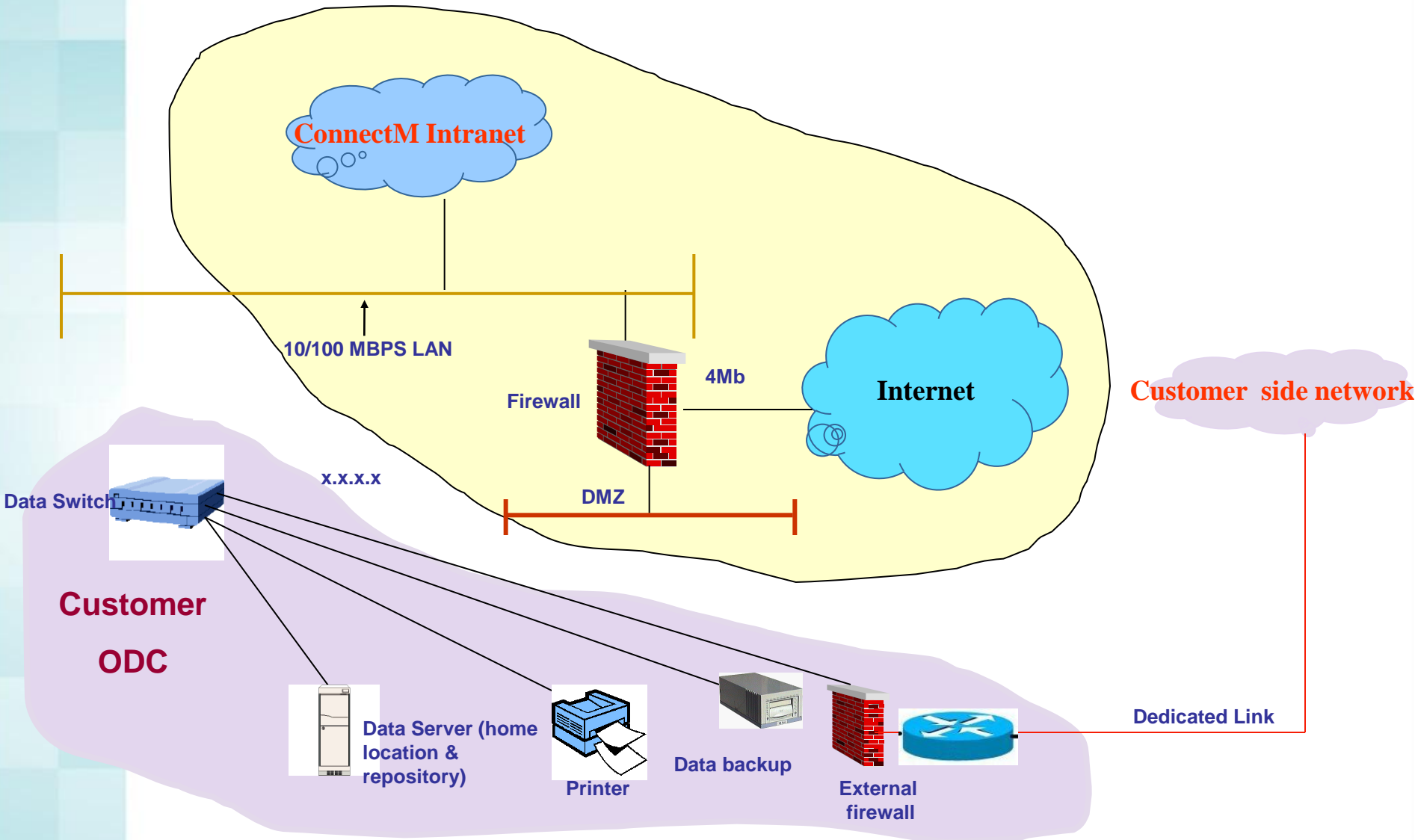


# Features – Shared Infrastructure

- ODC will have virtualized infrastructure with the security features of that of Isolated ODC.
- The developers in the ODC can connect to ConnectM network for accessing email, MIS, HR systems, and internet.
- ConnectM team cannot log on /access the ODC network logically



# Secure ODC with dedicated Infrastructure





# Features – Dedicated Infrastructure

- ODC will have Dedicated infrastructure within the Isolated ODC.
- The developers in the ODC can connect to ConnectM network for accessing email, MIS, HR systems only through external VPN link (If Internet is provided by Customer)
- ConnectM team cannot log on /access the ODC network logically /physically

- **Infrastructure**

- Gigabit LAN

- 1 data and 1 voice per desktop

- Layer 3 /Layer 2 Managed Switches

- Intel Desktops

- Operating System: License To be supplied by Client as applicable

- One telephone connection per 4 seats

- **Secured IT environment**

- Antivirus at the gateway and each desktops

- Firewall protection

- Multiple level of security for ODC and Corporate network

- Zoned access controlled project area for the size more than 25 developers

- Surveillance camera for the work zone for the size more than 25 developers

- **IP protection**

- Controlled IT environment

- Data protection at end-user level ( disabled USB/ CD writer/Removable media)

- File level ACL's for data repository

- Data Encryption if applicable

- Encryption for Note books

## Services

SLA based IT services  
8x5 monitored infrastructure  
Fortnightly reviews of SLA's

## Business Continuity

- Data backup (weekly, monthly)
- Offsite data vaulting - Optional
- Project archivals
- High Availability for Critical services (servers, links if applicable)
- High Availability for Power
- Disk redundancy on the servers, with RAID levels
- Synchronization to client site (if applicable)

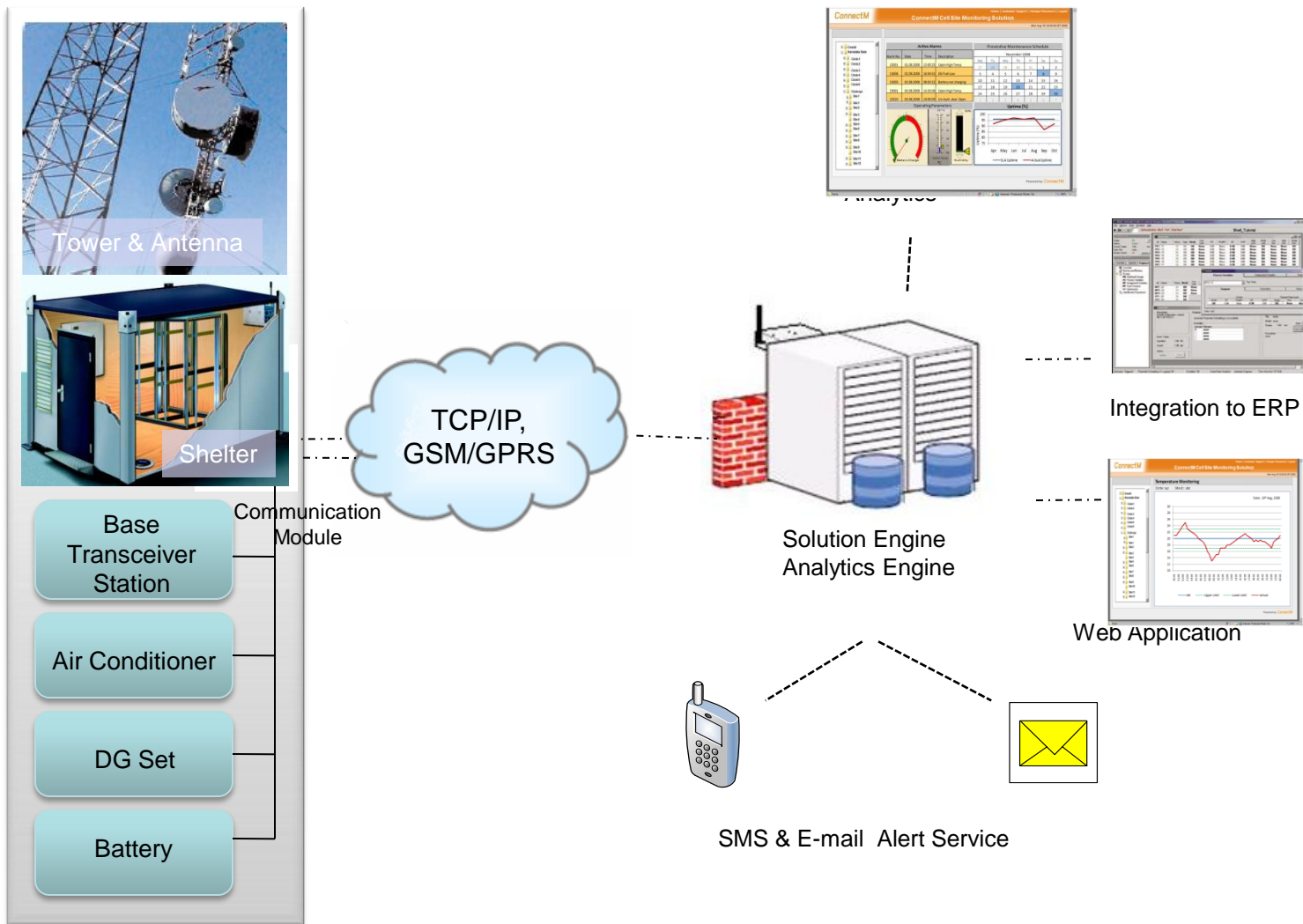
## Additional Services offered

- ✓ Technical Consultancy
- ✓ Information Security Management
- ✓ Storage Management
- ✓ Backup Services
- ✓ Vendor Management Services
- ✓ Configuration Management
- ✓ Server Management
- ✓ OS Admin
- ✓ Help Desk Services
- ✓ Desktop Support
- ✓ Linux Support
- ✓ Third Party Security Audits

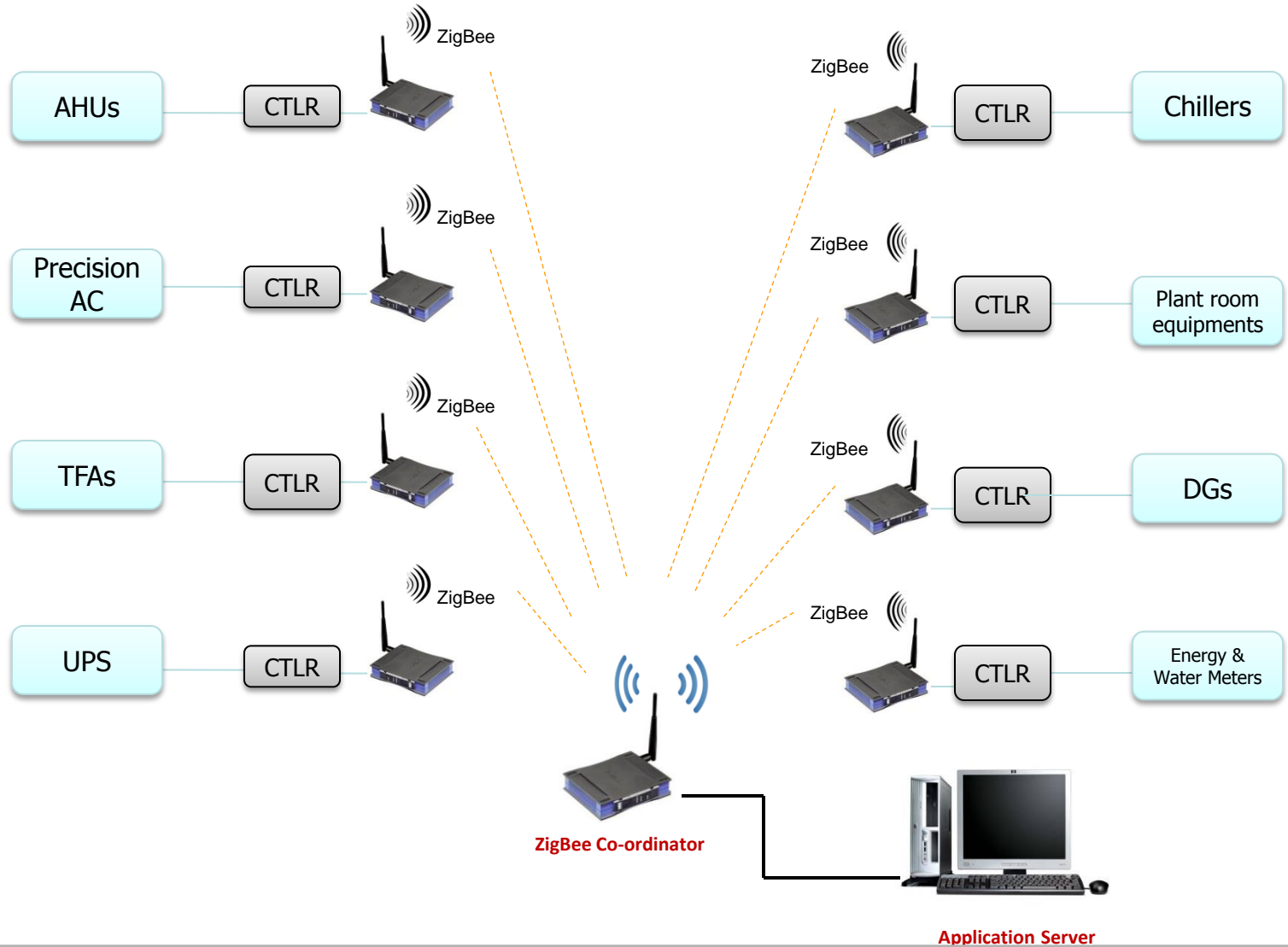


**ConnectM**  
*a Sasken and IDG Ventures company*

## Solution Case Studies



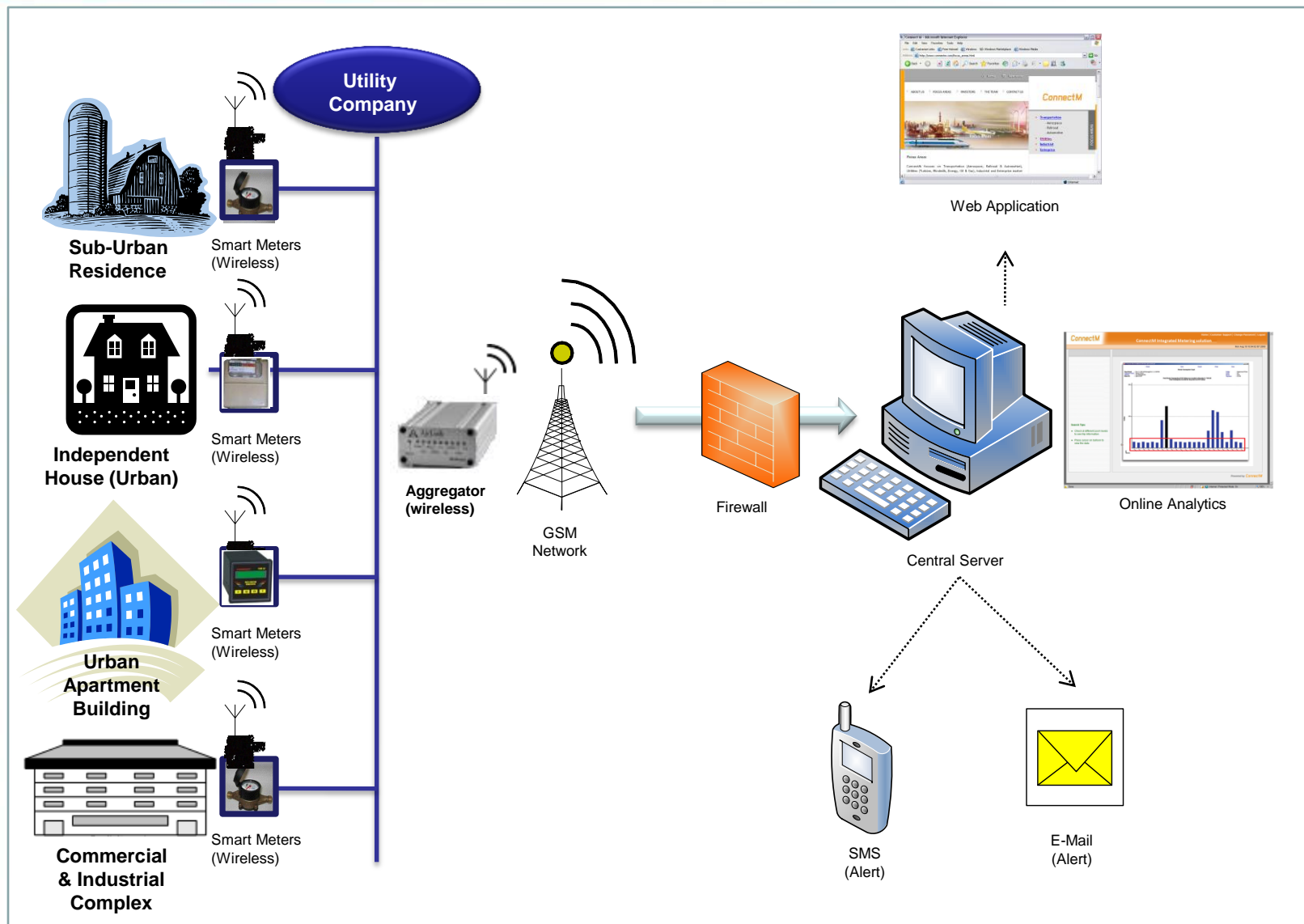
# Wireless EMS System Architecture



Note:

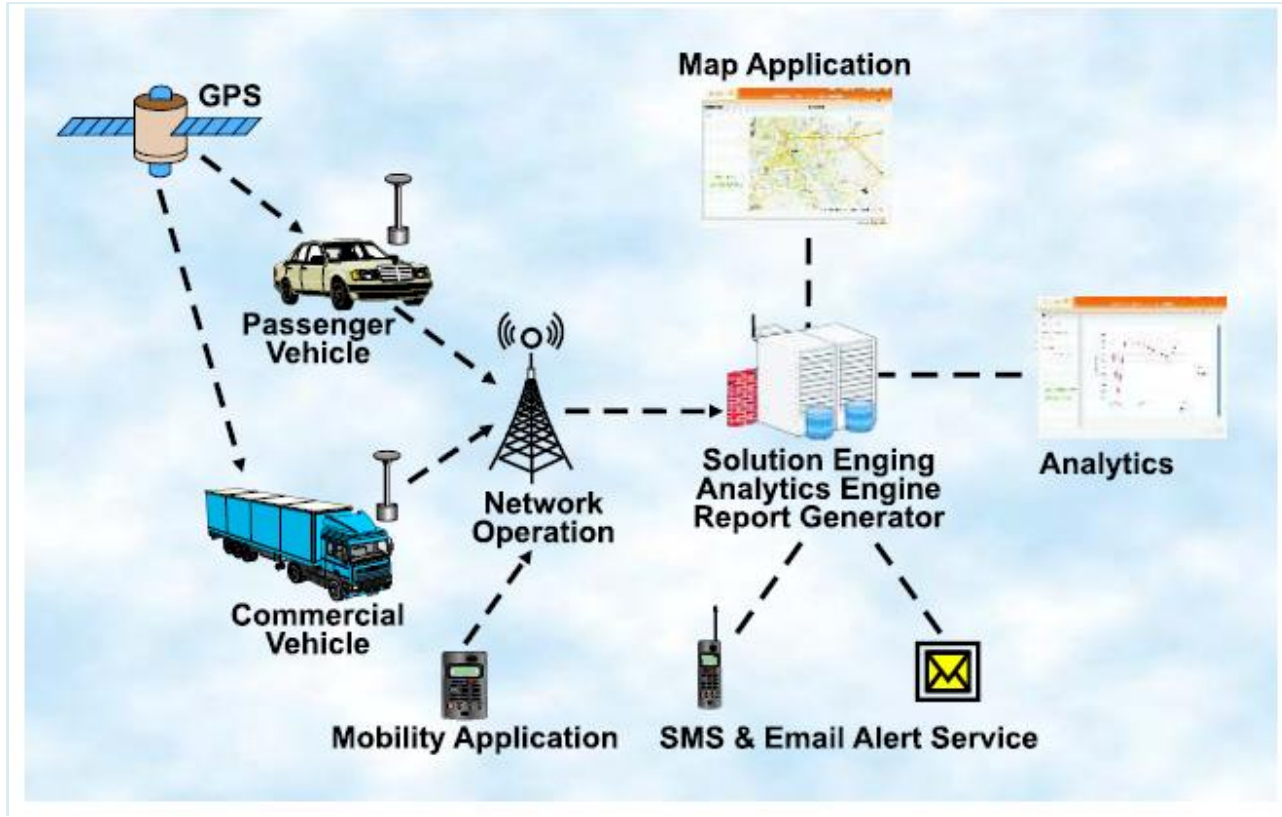
1. Each Controller (CTRL) has its own in-built I/Os and necessary communication ports

# Automated Meter Reading for Water, Energy and Gas meters





# Customized Fleet Management Solution



## Transport Vertical:

1. Fleet in Mining Industry
2. Public Road Transport
3. Fleet of Refrigerated Trucks with condition monitoring of goods in transit

# Remote Monitoring of DG Set Energy Management

- DG sets operate on expensive fuel, the cost of power generated out of DG set is more than double the cost of EB power. Hence DG set efficiency has a significant impact on monthly energy bills even if they are operating for a very small period of time.
- DG Set Energy Management Modules monitors,
  - ✓ DG Set energy generation monitoring
  - ✓ DG set fuel consumption
  - ✓ Specific fuel consumption of DG Sets to know Power generated per lit of fuel used. DG Set efficiency monitoring
  - ✓ DG Set fuel tank level indicator

## Benefit to User :

1. Monitoring of DG set efficiency on real time. Minimize minimize monetary impact of inefficiency of DG Sets
2. AMCs of the equipment can be performance based that just being a functional AMC
3. On availability of third party integration card other parameters can also be remotely integrated



# UPS Remote Monitoring

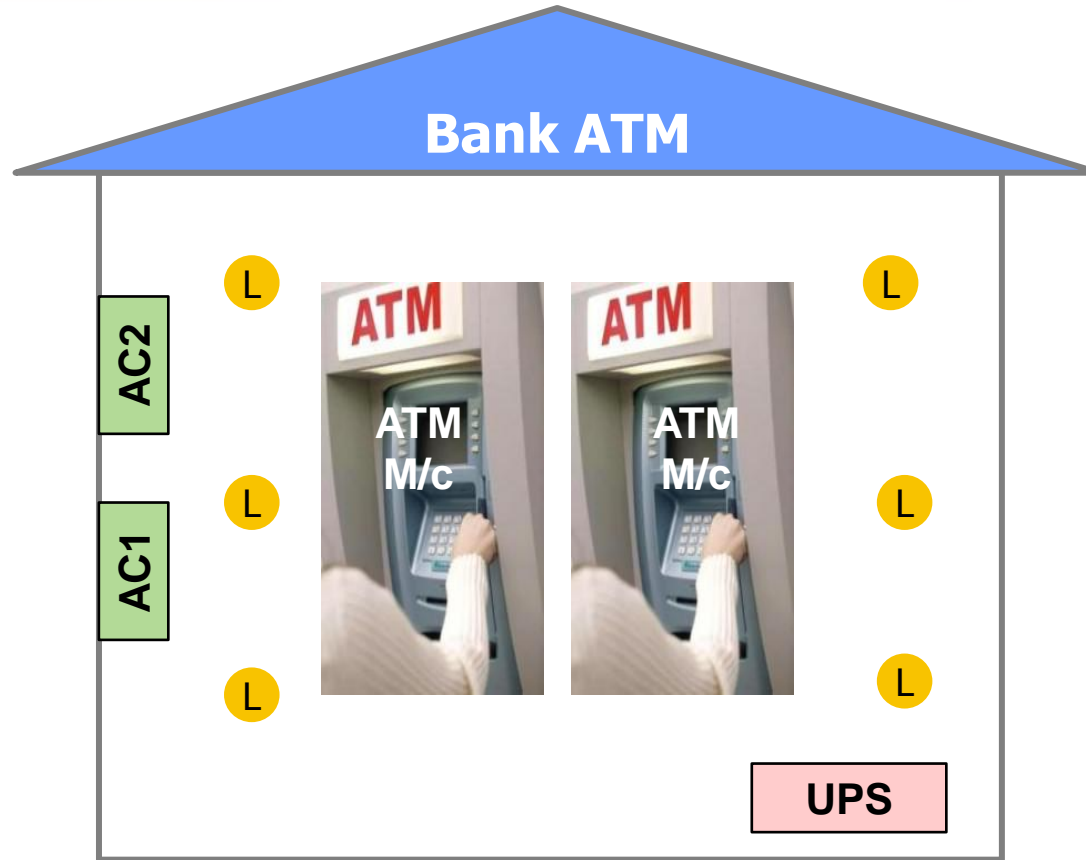
- Uninterrupted power supply system play a very important role to provide uninterrupted back-up power for critical areas in buildings.
- Their monitoring for operation and performance parameters is important to ensure maximum availability and low O&M costs.
- The UPS monitoring module includes monitoring of operating parameters like,
  - ✓ Voltage and frequency
  - ✓ % Loading
  - ✓ Temperature in the area
  - ✓ Health monitoring & Predictive Diagnostics
  - ✓ A third party integration card is required for this purpose

## Benefit to User :

1. Monitoring operating parameters and alarms for UPS using Modbus or SNMP communication hardware.
2. Predictive Diagnostics on UPS helps avoid major break-downs



# Remote Monitoring and Energy Management for Bank ATMs



- UPS & UPS Battery Bank Monitoring for ATM uptime
- Do all AC's need to run 24 x7 ?
- Do all Lights need to run 24 x 7 ?

AC – Split AC in ATMs  
L – CFL Lamps in ATMs

# Wireless Energy – Building Management System (EBMS)

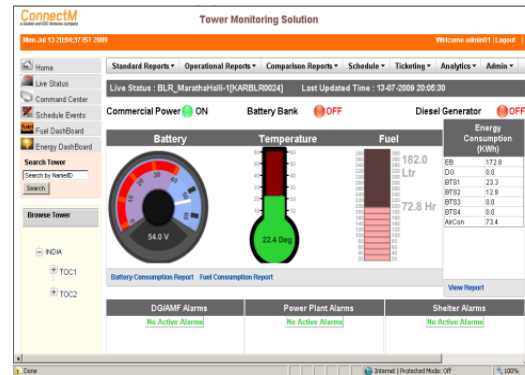
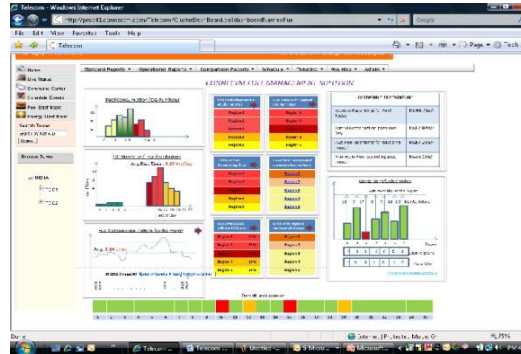
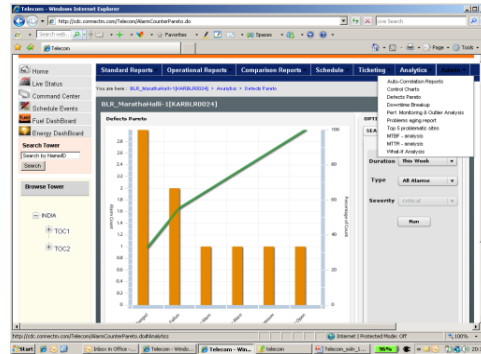
## Office Buildings & BFSI segment :

1. DG Sets
2. UPS in Critical Applications
3. Chillers
4. Lighting
5. HVAC Assets

(Management of all energy consuming assets in buildings)

**Remote Branch office Infrastructure Management** for Banks & Insurance companies

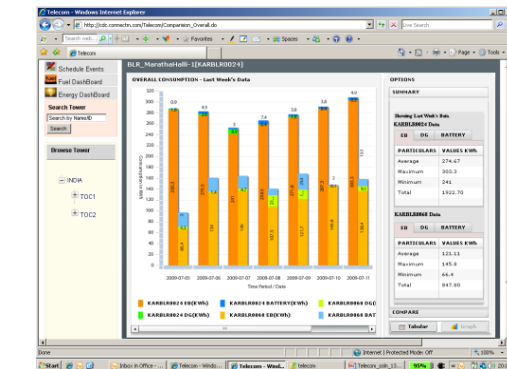
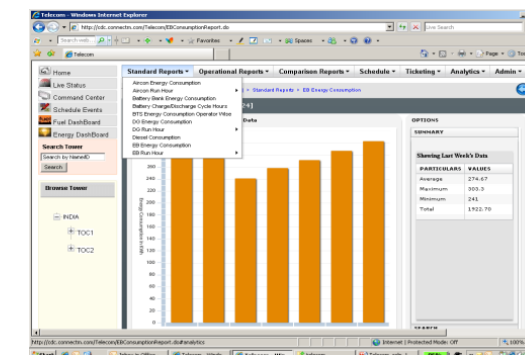
# M2M Sample Reports/Dashboards



Tower Monitoring Solution

Tower Details - Cluster Level

TowerID	Tower Name	Power Source	Fuel Level	Analysis Run Hours	Critical Alarms	Minor Alarms	Major Alarms	Total Alarms	SL of Operable
KARBLR0101	BLR_Majal Road (Majal Road)	Battery	-	0	2	3	4	2	2
KARBLR0102	BLR_Marathahalli	Battery	-	0	2	3	4	2	2
KARBLR0103	BLR_Sunabada	Battery	-	2	4	2	3	0	2
KARBLR0201	BLR_BNS Layout (BNS Layout)	Battery	-	0	1	2	3	0	2
KARBLR0202	BLR_Dussemar Road (Dussemar Road)	Commercial Power	-	0	0	0	0	2	2
KARBLR0203	BLR_Lady Road (Lady Road)	-	-	0	1	0	1	2	2
KARBLR0204	BLR_Marathahalli-1	Commercial Power	-	0	0	0	0	2	2
KARBLR0205	BLR_Rameswara Road (Rameswara Road)	Commercial Power	-	0	0	0	0	2	2
KARBLR0206	BLR_Dussemar Road (Dussemar Road)	Commercial Power	-	0	0	0	0	2	2
KARBLR0207	BLR_PTN Off	Commercial Power	-	1	0	0	1	2	2
KARBLR0208	BLR_HSR Layout (HSR Layout)	Commercial Power	-	0	0	1	1	2	2
KARBLR0209	BLR_Canton Towers (Canton Towers)	Commercial Power	-	0	2	2	4	2	2
KARBLR0210	BLR_Marathahalli Tower (Majal Road)	Commercial Power	-	1	0	0	1	2	2
KARBLR0211	BLR_Marathahalli-1	Battery	-	2	4	3	0	2	2
KARBLR0212	BLR_Marathahalli-2	Commercial Power	-	0	1	1	2	2	2
KARBLR0213	BLR_Chandra Layout	Battery	-	0	0	1	1	2	2



**Thank You**

**ConnectM Technology Solutions Pvt. Ltd.**

T +91 80 67683417

E [contactus@connectm.com](mailto:contactus@connectm.com)

U [www.connectm.com](http://www.connectm.com)

**ConnectM**  
*a Sasken and IDG Ventures company*