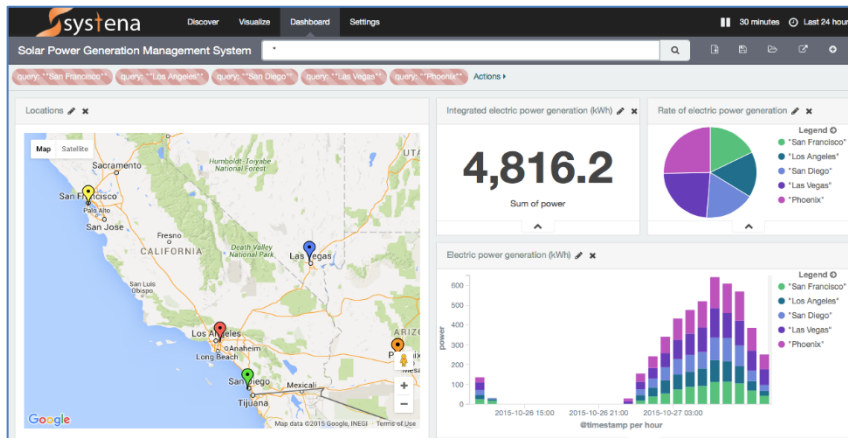




iR700B Use Cases with
Systemena's IoT Solution

- 1). Systema IoT Platform “Smart Attach”
- 2). Systema IoT Router “iR700 series”
- 3). Case study 1: Hospital
- 4). Case study 2: Digital signage system
- 5). Case study 3: Factory
- 6). Case study 4: Parking

Systema IoT management platform “Smart Attach” recognizes early stage launch of the IoT/M2M service through simple and rich customization.



It can be used in various environments such as solar power management, apartment security system management, etc.

Shipments of Systema’s IoT router “iR700” Series have surpassed 130,000 units in Japan market.



As an LTE-enabled wireless router, it is being used in solar power farms, metered parking, digital signage, and video surveillance, among others.

For preventive maintenance of medical equipment



Systema's solution is used in cloud management of dialysis equipment.



[Client Request]

A high quality, compact device to suit client needs.

There are high standards of quality and compact size for medical devices, and our customers choose iR700 series. Our router is designed and manufactured in **Japan** and because our process includes shipment inspection, our brand is well trusted. In dialysis systems, our client specifically needed a compact device which will optimally fit into the **minimal amount of space**. Keeping in mind the radio waves, in Japan, PHS network is used. Usage of smartphones and tablets around in a patient care environment is still growing in the US.

For communication within digital signage



Used by major Japanese railway companies.

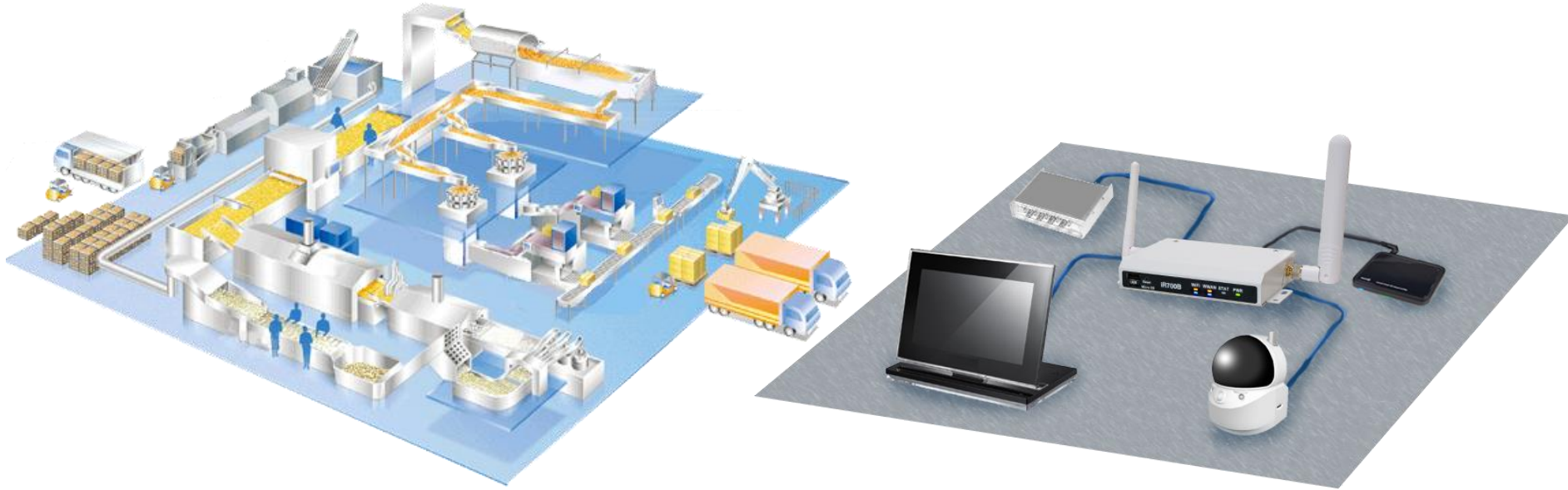


[Client Request]

New carrier/network? No need to replace iR700B.

Making connectivity possible within **2G, 3G, LTE 4G**, a router which can adapt to a crowded area is much desired. **Even if a new carrier is added**, it can continue to operate with its flexibility to **perform firmware updates** and continue to operate. The **cost reductions** (actual: \$100,000) come from forgoing purchasing new routers, installation, and setup fees which made selecting iR700B an easy one.

For production lines in factories



[Client Request]

One model complies to certifications in Japan, Americas and Europe.

iR700B has **FCC/IC/CE/TELEC certifications** for connections to all of Japan, US/Canada and Europe networks are possible. In factory environments, compatibilities with various external connectivity is required. Including analog, iR700B offers **7 interfaces**. Clients have **rated our IoT Platform "Smart Attach" highly** for the visualization, analytics, and factory monitoring features.

For management of parking lots



[Client Request]

Wide connectivity coverage, remote control capabilities.

iR700B can provide 2G, 3G, LTE 4G connectivity with AT&T and Verizon so the coverage is a wide range. For a client who managed a number of parking lots, only iR700B offered the ideal features of as remote controlling from a control center, error detection and automatic restoration. Systema's system also enabled the client to update parking fee prices via the remote software update features.

Systema America Inc.

<http://www.systema.us>

■ California Office

1660 S. Amphlett Blvd. Suite 114, San Mateo, CA 94402

Phone: 650-346-9774 (Japanese/ English)

■ Kansas Office

6800 College Blvd. Suite 320, Overland Park, KS 66211

Phone: 650-346-6237 (Japanese/ English)

Sales Representative : sales@systema.us

