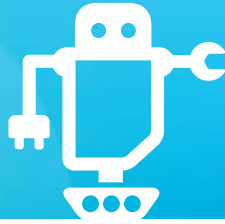




Wireless Logic is Europe's leading M2M managed services provider, delivering one-stop solutions that combine secure infrastructure, resilient control platforms and multiple network connectivity.



## Sector specialists

### Security

CCTV  
Intruder alarms  
Door entry systems

### Fleet

Vehicle tracking  
Route optimisation  
Status monitoring  
Telemetry  
Driver behaviour  
Mobile (PAYG) insurance

### Monitoring and metering

Environmental monitoring  
Service metering

### Remote worker

Fieldforce automation  
Lone worker applications

### Agriculture

Remote sensor monitoring  
Crop optimisation

### Retailing

Display boards  
EPOS  
Footfall monitoring  
Voucher redemption

### Transport

Road signage  
Traffic monitoring

### Healthcare

Telecare  
Telehealth  
Assisted Living  
Patient record outcomes  
Remote health monitoring

### Enterprise

ADSL replacement/  
back-up

**Working in partnership with major mobile and satellite networks, we provide best-in-class managed services to system integrators, application providers and end user clients from global blue chip organisations to small and medium enterprises.**

Fundamental to our success is an inherent ability to develop and deliver tailored Platform as a Service (PaaS) and Infrastructure as a Service (IaaS) solutions. These are designed to meet the needs of an ever demanding and evolving market where reliability, cost-effectiveness, Service Level Agreements (SLAs) and sector knowledge are vital.

In just a short time, Wireless Logic has become globally recognised as well as preferred partner to many of the world's Mobile Network Operators (MNOs) delivering a critically important layer between mobile networks and organisations requiring a dedicated M2M managed services solution.

The DNA of Wireless Logic is reliable, resilient and cost-effective connectivity. As preferred M2M partner to all of the European-based major MNO's, we have direct access to the innermost workings of the networks. Technical challenges are addressed efficiently and, as a consequence of our growing subscription base, purchasing power enables us to command highly competitive pricing, SLAs are agreed to suit our customers, and we can enjoy an ongoing insight into network developments affecting the M2M global space.

One of the organisation's principle USP's is an ability to overlay a private secure network across the global mobile networks to give customers access to an otherwise high-cost and complex platform. Known as NetPro, our IaaS has transformed organisations' capabilities in deploying secure and resilient network structures with no CAPEX, stringent SLAs and the important ability to fix IPs to each mobile device.

To make sure that customers' M2M assets remain in their control, our PaaS, SIMPro is now utilised by over 95% of users - giving them complete visibility, management, tailored billing and reporting functions across entire SIM estates, regardless of mobile network.

## European presence

The group has three country offices located in France, Germany and Spain. Additionally SimService, Denmark is now part of the Wireless Logic Group. Each location is headed up by a country manager along with business development teams and tech support.

## Airtime

Selecting the right network, service and tariff should all be predicated on the application's communication and connectivity need; from location to data usage, whether the device is static, mobile, national or international. With this information, we can propose suitable networks and tariffs along with contract periods designed to meet the time period of the project.

As the market evolves, connectivity management is becoming a key focus in terms of business value. The science of application vs network selection is an important part of the Wireless Logic 'value-add'. The right choice can enable considerable savings over the life of a deployment.

SIMs can be distributed to customers pre-provisioned or dormant. Self-provisioning via SIMPro gives users complete control, ensuring connectivity is only paid for once the application is ready to go live.

## Global SIMs

Dependent upon the required application, Wireless Logic has a number of Global SIM solutions, enabling a 'one SIM fits all' deployment regardless of location or usage. Selection of the most appropriate network is predicated on usage and capability. With all global SIM solutions, recommendations can be made re the roaming options, with users being able to specify choice of preferred secondary networks.

## Satellite connectivity

Working in partnership with Inmarsat, Wireless Logic's global connectivity jigsaw is now complete, with 'out of reach' mobile network coverage now accessible via Inmarsat's BGAN. The solution delivers voice and broadband data connectivity to users wherever they are on the planet.

## Aggregation

SIM usage aggregation enables customers to keep a strong hold on airtime costs, with aggregated models on both same network and multiple networks, based upon same data usage monthly tariffs. Wireless Logic can develop tailored plans that enable users to spread data liability, thus delivering defined cost-control across variable data usage SIM estates.

## Managed Finance

Wireless Logic Managed Finance is an industry first for companies to gain managed financial support to fund M2M applications and an alternative to traditional finance deals. Using Managed Finance, companies can bundle the cost of monthly airtime subscriptions together with hardware and software costs, into one contract.



## SIMPro

### Platform-as-a-Service (PaaS)

SIMPro is the engine behind a user's complete visibility, control, billing and management of SIM estates, regardless of mobile network. Designed to view the activity of large SIM estates, SIMPro is now in its fourth derivation, with further features designed to increase the user's experience.

As a standalone platform with API, the majority of Wireless Logic's customers now utilise SIMPro as part of the daily management of their M2M activity. Accessed over the cloud, there is no requirement for software downloads, yet, security is 100% with multi-level access. Key to SIMPro is its ability to deliver real-time reporting, accessed at all times, from anywhere.

### With SIMPro - users are in complete control:

- Industry-leading customer-centric dashboard
  - Tailored activation profiles - 'Customer Solutions' assigning tariffs and SIM settings to specific device uses
  - Directly activate and suspend SIMs
  - Monitor and report on activity of an entire SIM estate - across multiple networks, local and global SIMs
  - Realtime usage visibility and alerts in association with NetPro
  - Optimise the performance of SIMs - monitor data usage to ensure the right tariff is selected - and thus avoid 'Bill shock'\*
  - Track the activation process using SIMPro's traffic light notification system
  - SIMswap - act immediately if a SIM is lost or stolen
  - Integrate with the HERE mapping platform
  - Communicate two-way with multiple network SMS aggregation tool
  - Specify key requirements e.g. International roaming or voice
  - Produce and download tailored reports on estate activity
  - Manage and progress activation dates and times
  - View current tariffs on a per SIM basis
  - View and download comprehensive billing via BillPro
  - Enhanced search by SIM, Fixed IP, individually assigned SIM name or mobile number
  - Data synchronisation and request management via API.
- \* When used with NetPro

## NetPro

### Infrastructure-as-a-Service (IaaS)

NetPro is a secure and resilient private network connecting mobile devices and assets across the cloud.

As a carrier-grade secure, fast and reliable private network, NetPro delivers a cost-effective alternative to organisations that want to avoid major investment in their own IT architecture, leased lines and associated support costs.

NetPro has collocated TIER 1 data centres in London Docklands and Elstree, Hertfordshire UK to deliver secure and resilient private network capability with fully redundant interconnects. NetPro connects via dedicated hubs directly into each of our major network partners utilising APN gateways and RADIUS servers. As part of NetPro, Wireless Logic has developed ONEapn, (WLAPN.COM) a single point APN which is common to several networks. This is particularly relevant when multiple devices are being connected though choice of network is not known.

### Enabling fixed IP

NetPro applies fixed IP addressing to mobile devices to enable secure routing from Wireless Logic's infrastructure to the remote user's LAN. NetPro's ability to deploy a fixed IP to a module enables a device to be passive in communications - a user can securely retrieve data from a machine instead of relying on it to be sent, and send two-way instructions that remain secure at every part of the data's passage.

This approach has great advantages in the M2M world from a cost and infrastructure perspective, with no CAPEX required to be part of a resilient private network.

**NetPro is also available to users on a license-basis who are already contracted with mobile networks and that are not subscribed via Wireless Logic.**

### Benefits at a glance:

- Carrier-grade, fully redundant infrastructure across major MNOs
- Minimal upfront costs and a fixed-fee per user per month thereafter
- Total cost of ownership reduced -no need to purchase expensive leased line and related infrastructure
- 24.7 in-house technical support
- 'Tier 1' Co-location data centres with multiple links to MNOs
- Static IP - all MNOs and all locations
- Secure Radius authentication
- One APN: Same infrastructure and APN for multiple applications - WLAPN.COM
- Integration to many back-end systems
- Real-time data monitoring
- IPSEC 3DES VPN encryption & termination
- Adheres to customers' security policies and firewall, security protocols and encryption
- Scalable to an unlimited number of connected devices
- Cost-effective connectivity for trials
- Flexibility - don't have to subscribe to connectivity through Wireless Logic.

## MapPro

### Mapping and location-based services

MapPro is Wireless Logic's mapping and location-based services platform that delivers the next generation of maps and location experiences across any screen and operating system.

Combining the skillsets and resource of HERE and Google Maps, and the unrivalled offerings of M2M connectivity and supporting value-add of Wireless Logic, MapPro delivers a mapping and mobile proposition that is being implemented across the UK and Europe.

### Low cost of entry

Until now, access to the world's leading mapping platforms has been limited to organisations capable of outlaying significant licensing fees with high minimum usage tariffs and accompanying set-up costs. Through collaboration with Wireless Logic, the HERE location platform and Google Maps are now accessible to all organisations, with ultra-low cost of entry.

### MapPro highlights:

- The world's leading Global Mapping Platform now available to organisations and users of all sizes
- Low cost of entry
- Supported by experts
- Exciting new financial models linked to monthly M2M SIM contracts
- No impact on CAPEX.

### Headquarters

**Wireless Logic Group Ltd**  
Grosvenor House  
Horseshoe Crescent  
Beaconsfield, Buckinghamshire  
HP9 1LJ United Kingdom  
T +44 (0)1494 679 800  
E info@wirelesslogic.com

**Wireless Logic France**  
Parc de la Duranne  
255, Avenue Galilée  
13857 Aix-en-Provence Cedex 3  
T +33 (0)4 42 16 60 17  
E info-france@wirelesslogic.com

**Wireless Logic GmbH**  
Technopark Neukeferloh  
Am Hochacker 4  
85630 Grasbrunn  
T +49 (0)89 55 06 2295  
E info-germany@wirelesslogic.com

**Wireless Logic Spain**  
Carretera Sangroniz 6  
Edif 5-5M, 48150 Sondika  
Vizcaya  
T +34 944 043 962  
E info-spain@wirelesslogic.com

**Wireless Logic Denmark**  
SimService A/S  
Valdemarshaab II, 1  
DK 4600 Køge  
T +45 7022 2045  
E info-denmark@wirelesslogic.com

