



Make an Impact with the Internet of Things

Build unique solutions for your business • Generate customized code with Temboo • No more one-size-fits-all applications

Conveyor system

Sensor Data | Controls

- Vertical Conveyor
- Left Conveyor
- Dispenser Flow: 872

CODE

```
void loop() {
  if (numRuns <= maxRuns) {
    Serial.println("Running SendEmail - Run #" + String(numRuns++));
    TembooChoreo SendEmailChoreo;

    // Invoke the Temboo client
    SendEmailChoreo.begin();

    // Set Temboo account credentials
    SendEmailChoreo.setAccountName(TEMBOO_ACCOUNT);
    SendEmailChoreo.setAppName(TEMBOO_APP_KEY_NAME);
    SendEmailChoreo.setAppKey(TEMBOO_APP_KEY);

    // Set profile to use for execution
    SendEmailChoreo.setProfile("myEmail");

    // Identify the Choreo to run
    SendEmailChoreo.setChoreo("/Library/Utilities/Email/SendEmail");

    // Run the Choreo; when results are available, print them to serial
    SendEmailChoreo.run();

    while(SendEmailChoreo.available()) {
      char c = SendEmailChoreo.read();
      Serial.print(c);
    }
  }
}
```

Build IoT Applications with Temboo

new application

Water Management

Build a system that sets a tank, calls you when it's empty, and allows you to reserve.

Build It

What are you sensing?

- Light
- Motion
- Temperature
- Gas
- Liquid level
- Touch
- Proximity
- Other

Lab Refrigerator C7: 57 F

Lab Refrigerator C2: 55 F

Lab A Humidity: 37 F

Lab A Brightness: 36 F

Lab Refrigerator A1: 38 F

Lab B Humidity: 33 F



What's Unique about Temboo?

Deploy IoT Applications in minutes.



GENERATED CODE

Generated code takes into account the desired architecture, chipset, sensors, actuators, and other details to create unique solutions for customers' needs.



RAM & POWER CONSERVATION

Code comes optimized for the application and its configuration details so that it minimizes power consumption and memory usage among other benefits.

Bring your own chips, sensors, & other hardware.



YOUR HARDWARE

Customers aren't limited to proprietary hardware. Temboo software libraries ship on millions of development boards. For others, Temboo's SDKs and Cloud APIs can be used.



RETROFIT OR BUILD FROM SCRATCH

Whether retrofitting existing machinery or building something new, Temboo offers flexibility and expertise on combining equipment from different manufacturers.

Just in time data and cloud-based remote controls.



SENSOR DATA VISUALIZATION

Customers can see the status of their devices on the Temboo website. Updated graphs of sensor data are available for every device and sensor.



REMOTE CONTROLS

Web-based controls that can switch pins off and on and adjust output power to connected lights, motors or other actuators.

Zero friction.



START BUILDING RIGHT AWAY

Unlike most platforms, Temboo lets customers start building their application immediately and know their costs. No need for contracts, sales calls, or negotiating rates.



TOP TECH SUPPORT & EXPERTISE

Temboo's entire team is standing by to help make customers' IoT applications successful with superior support and technical guidance.

Choose the hardware platform you want to program for your IoT application.

Select the sensors and actuators your application is using.

The screenshot shows the Temboo web interface. At the top, there is a search bar and two dropdown menus: 'Your Board' and 'M2M Communication'. On the left, a sidebar lists various 'CHOREOS' such as 23andMe, Amazon, and others. The main content area displays the configuration for 'SMSMessages . SendSMS', which sends an SMS to a specified phone number. Below this, there are sections for 'API CREDENTIALS' with input fields for 'AccountSID', 'AuthToken', and 'Body'. A circular overlay on the right side of the interface shows a 'What are you sensing?' dialog box with a list of sensor options: Light (selected), Motion, Temperature, Gas, Liquid level, Touch, Proximity, and Other. The dialog also features a list of numbered radio buttons (0-10) for selecting a specific sensor instance.

Specify the parameters of your sensor.

M2M Communication

IoT Mode **ON**

Light Sensor

ANALOG

Light

Graph safe bounds

min — max lux

Cancel Save

Set safe, caution, and alert bounds for sensor readings.

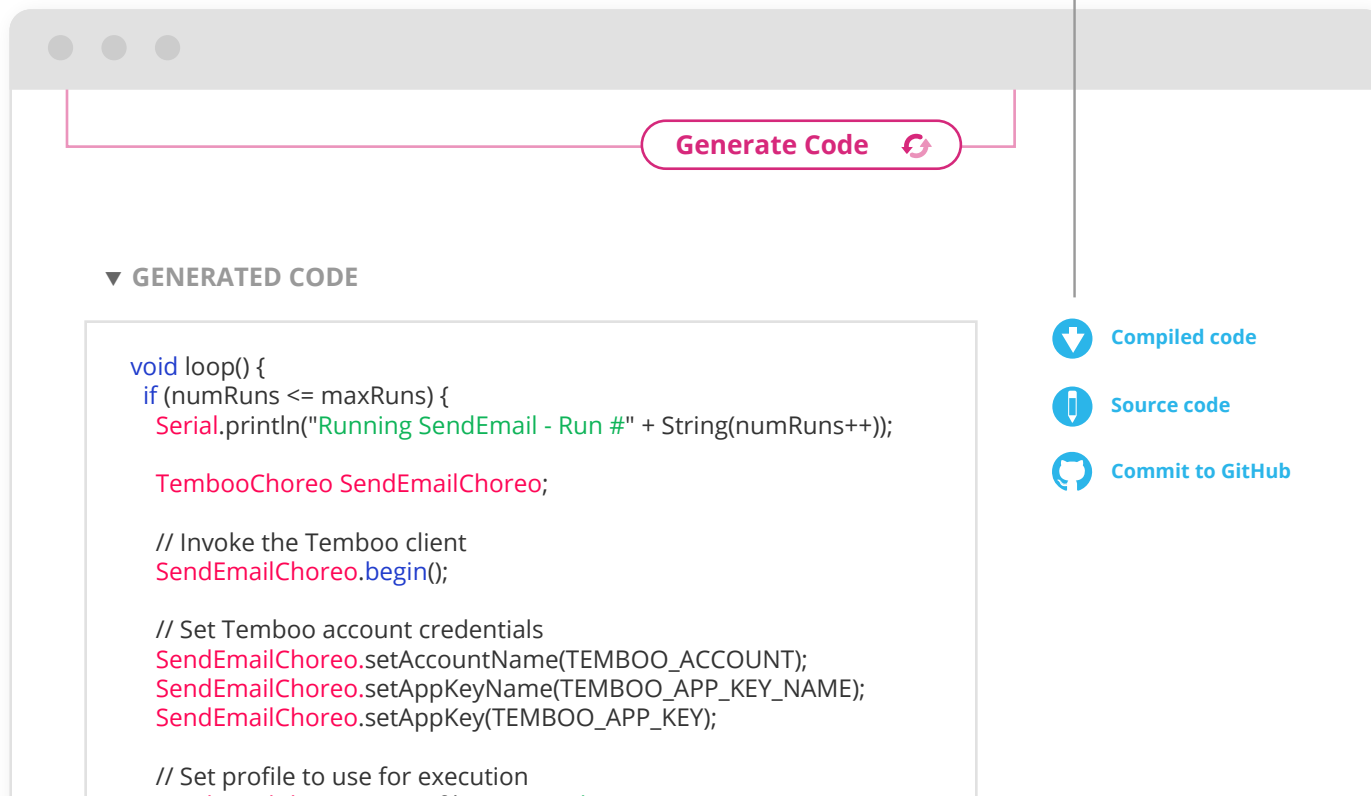
Add conditional logic that reacts to sensor readings and API responses.

Register programmed devices to monitor how they run your application.

The screenshot shows the Temboo interface for configuring a choreo. At the top, there are three window control buttons. Below them are three navigation boxes: "Search Library" with a magnifying glass icon, "Your Board" with a board icon and a dropdown arrow, and "M2M Communication" with a network icon and a dropdown arrow. On the left, under the heading "CHOREOS", there is a list of services with right-pointing chevrons: 23andMe, Amazon, AuthorizeNet, Basecamp, Bitly, Box, CloudMine, ConstantContact, DonorsChoose, Dropbox, EnviroFacts, and FedEx. The main area displays the configuration for "SMSMessages . SendSMS", which "Sends an SMS to a specified phone number." Below this, under "CHOREO TRIGGER", there is a dropdown menu set to "Light Sensor 1". The trigger logic is defined as: "If Light Sensor 1 at ANALOG A3 is > 500 lux then run the Choreo". At the bottom, there is a section for "API CREDENTIALS".

Download automatically generated code and upload it to your hardware.

Deploy your applications.



Generate Code ↻

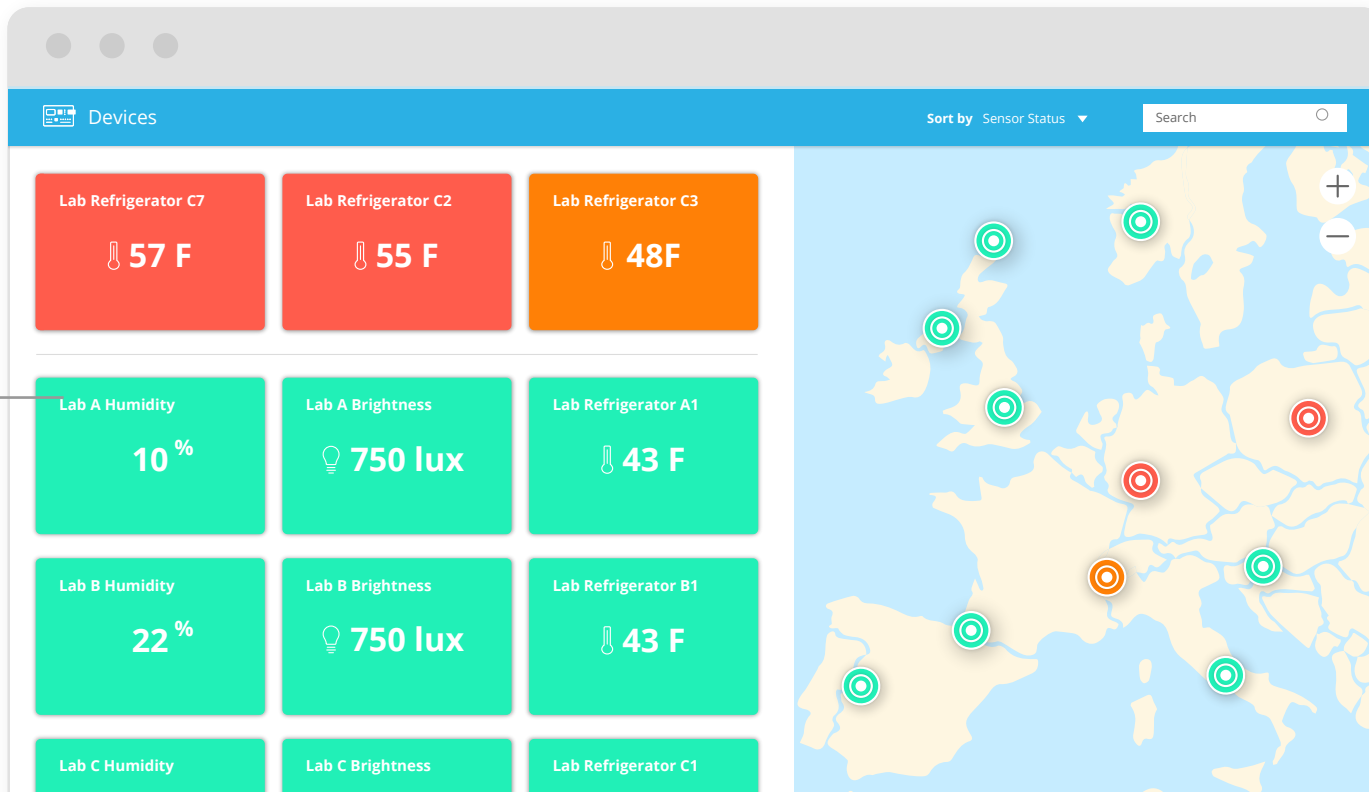
▼ **GENERATED CODE**

```
void loop() {  
  if (numRuns <= maxRuns) {  
    Serial.println("Running SendEmail - Run #" + String(numRuns++));  
  
    TembooChoreo SendEmailChoreo;  
  
    // Invoke the Temboo client  
    SendEmailChoreo.begin();  
  
    // Set Temboo account credentials  
    SendEmailChoreo.setAccountName(TEMBOO_ACCOUNT);  
    SendEmailChoreo.setAppKeyName(TEMBOO_APP_KEY_NAME);  
    SendEmailChoreo.setAppKey(TEMBOO_APP_KEY);  
  
    // Set profile to use for execution  
    SendEmailChoreo.setProfileName(TEMBOO_PROFILE_NAME);  
  }  
}
```

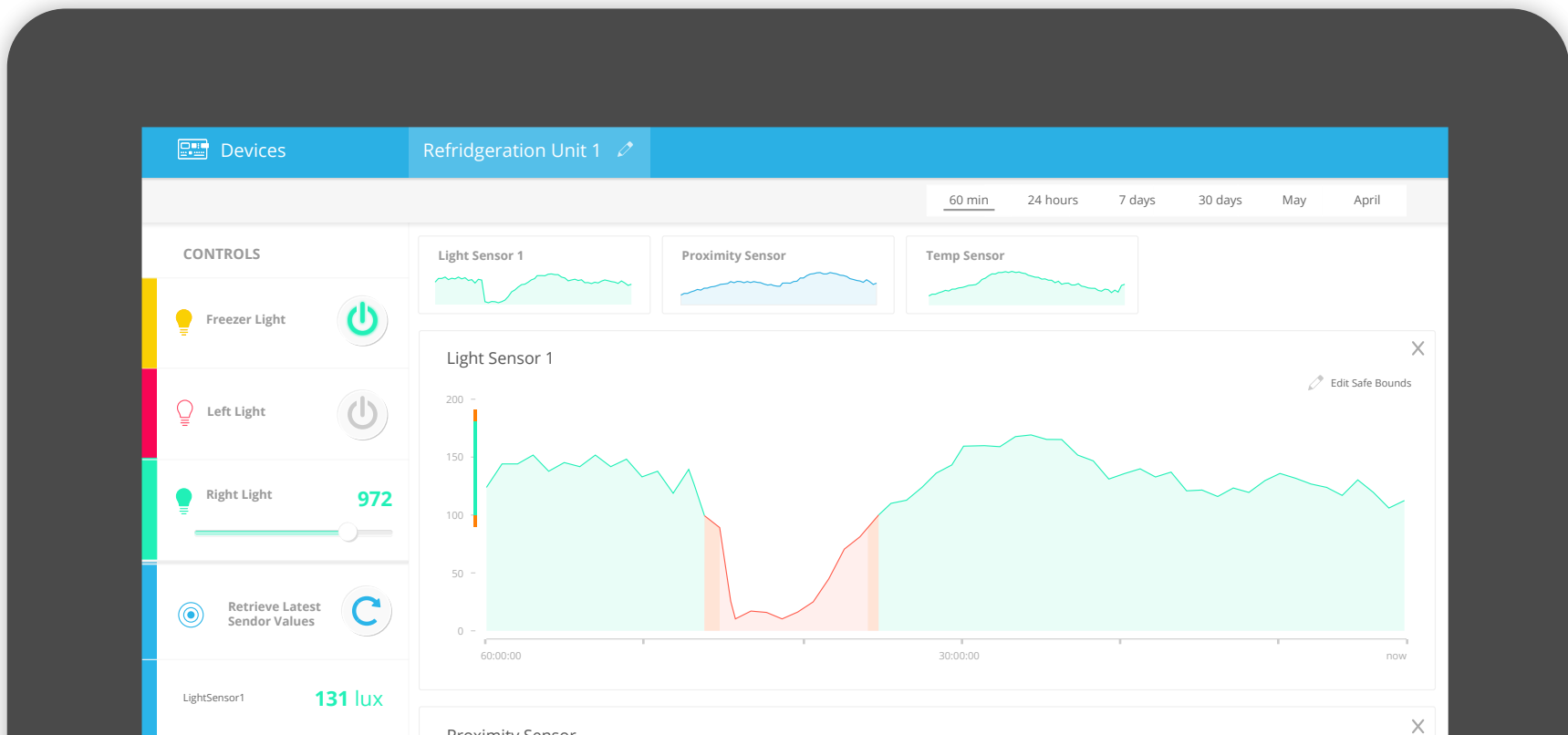
- ↓ **Compiled code**
- 📄 **Source code**
- 🐙 **Commit to GitHub**

View the status of your application's devices in your browser.

Devices are automatically added once they start running Temboo applications.



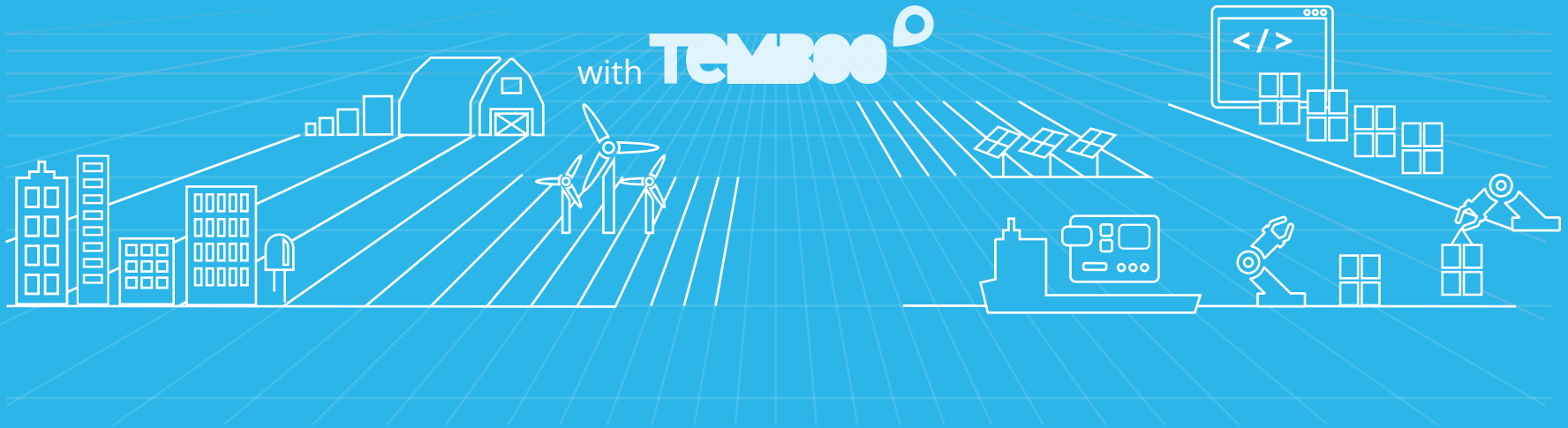
Stay updated and in control of your IoT applications from anywhere.





Program the world.

Generate code for any IoT Application



hey@temboo.com

104 Franklin St. 4th fl • New York City, New York • 10013